

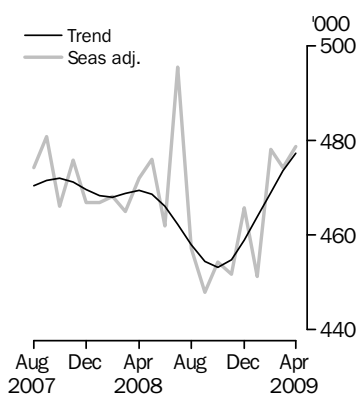
OVERSEAS ARRIVALS AND DEPARTURES

AUSTRALIA

EMBARGO: 11.30AM (CANBERRA TIME) THURS 4 JUN 2009

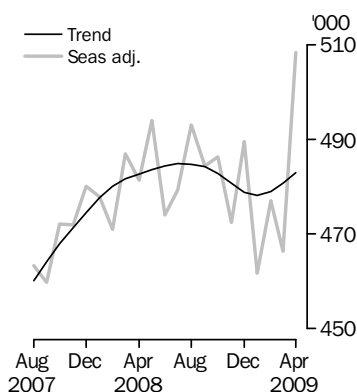
Visitor arrivals

Short-term



Resident departures

Short-term



KEY FIGURES

| | Apr '09 | Mar '09 to Apr '09 | Apr '08 to Apr '09 |
|---------------------------------------|------------|--------------------------|--------------------------|
| | '000 | % change | % change |
| Short-term visitor arrivals | | | |
| Trend | 477.3 | 0.8 | 1.7 |
| Seasonally adjusted | 478.7 | 0.9 | .. |
| Original | 455.6 | .. | .. |
| Short-term resident departures | | | |
| Trend | 483.0 | 0.5 | 0.1 |
| Seasonally adjusted | 508.4 | 9.0 | .. |
| Original | 503.9 | .. | .. |

.. not applicable

KEY POINTS

SHORT-TERM VISITOR ARRIVALS

- *Trend estimates:* Short-term visitor arrivals to Australia during April 2009 (477,300 movements), rose 0.8% compared with March 2009 (473,600 movements). This followed monthly increases of 1.1% for February 2009 and 1.0% for March 2009.
- Currently, trend estimates for arrivals are 1.7% higher than in April 2008.
- *Seasonally adjusted estimates:* During April 2009, arrivals (478,700 movements) increased by 0.9% compared with March 2009 (474,300 movements). This followed a monthly increase of 6.0% for February 2009 and a monthly decrease of 0.8% for March 2009.
- *Original estimates:* There were 455,600 arrivals to Australia in April 2009.

SHORT-TERM RESIDENT DEPARTURES

- *Trend estimates:* Short-term resident departures from Australia during April 2009 (483,000 movements), recorded an increase of 0.5% compared with March 2009 (480,700 movements). This followed monthly increases of 0.2% for February 2009 and 0.4% for March 2009.
- Currently, trend estimates for departures are marginally higher than in April 2008.
- *Seasonally adjusted estimates:* During April 2009, departures (508,400 movements) increased by 9.0% compared with March 2009 (466,300 movements). This followed a monthly increase of 3.3% for February 2009 and a monthly decrease of 2.2% for March 2009.
- *Original estimates:* There were 503,900 departures from Australia during April 2009.

INQUIRIES

For further information about these and related statistics, contact the National Information and Referral Service on 1300 135 070 or Anne Ward on Canberra (02) 6252 6871.

NOTES

FORTHCOMING ISSUES

| <i>ISSUE</i> | <i>RELEASE DATE</i> |
|----------------|---------------------|
| May 2009 | 7 July 2009 |
| June 2009 | 4 August 2009 |
| July 2009 | 4 September 2009 |
| August 2009 | 6 October 2009 |
| September 2009 | 6 November 2009 |
| October 2009 | 7 December 2009 |



DATA NOTES

This publication contains overseas movement data which should not be interpreted as 'persons'. See paragraph 5 of the Explanatory Notes for more detail.

The statistics in this publication have been rounded to the nearest 100 for short-term movements and to the nearest 10 for permanent and long-term movements. As a result, sums of the components may not add exactly to totals. Analysis featured in this publication is based on unrounded data. Calculations made on rounded data may differ to those published.

CHANGES IN THIS ISSUE

There are no changes in this issue.



ABBREVIATIONS

| | |
|---------------|---|
| ARIMA | autoregressive integrated moving average |
| DIAC | Australian Government Department of Immigration and Citizenship |
| NZ | New Zealand |
| OAD | overseas arrivals and departures |
| SAR | Special Administrative Region |
| SARS | Severe Acute Respiratory Syndrome |
| STRD | short-term resident departure |
| STVA | short-term visitor arrival |
| TRIPS | Travel and Immigration Processing System |
| UK, CIs & IOM | United Kingdom, Channel Islands and Isle of Man |
| USA | United States of America |

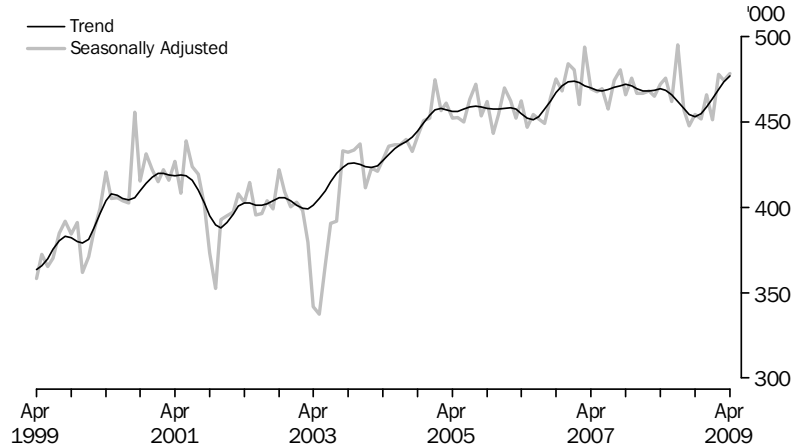
Peter Harper
Acting Australian Statistician

MAIN FEATURES

SHORT-TERM VISITOR ARRIVALS

In trend terms, short-term visitor arrivals to Australia during April 2009 (477,300 movements) rose 0.8% when compared with March 2009 (473,600 movements). Currently, short-term visitor arrivals are 1.7% higher than in April 2008.

SHORT-TERM VISITOR ARRIVALS, Australia



The following table presents the top ten source countries (based on original estimates) for short-term visitor arrivals during April 2009. When trend estimates for short-term visitor arrivals for April 2009 and April 2008 were compared, the highest percentage increases were recorded by Taiwan (48.7%) and Malaysia (30.4%) while the highest percentage decreases were recorded by Korea (16.2%) and Japan (15.1%).

SHORT-TERM VISITOR ARRIVALS, Australia(a)—April 2009

| | Trend | Seasonally Adjusted | Original | Mar 09 to Apr 09 | Apr 08 to Apr 09 |
|--------------------------|-------|---------------------|----------|------------------|------------------|
| | '000 | '000 | '000 | Trend % change | Trend % change |
| New Zealand | 94.8 | 93.3 | 98.8 | -0.5 | 1.6 |
| UK, CIs & IOM(b) | 55.6 | 55.7 | 54.0 | 0.7 | -3.2 |
| United States of America | 36.7 | 37.0 | 33.2 | -0.4 | -3.3 |
| China | 36.1 | 32.2 | 30.8 | 1.9 | 11.3 |
| Japan | 33.4 | 34.3 | 27.7 | 1.1 | -15.1 |
| Singapore | 24.9 | 25.4 | 23.1 | 1.9 | 10.5 |
| Malaysia | 18.5 | 19.3 | 19.0 | 2.8 | 30.4 |
| Hong Kong | 14.5 | 14.3 | 18.6 | 2.3 | 19.4 |
| Korea | 16.0 | 16.3 | 14.4 | 2.9 | -16.2 |
| Taiwan | 9.3 | 10.8 | 11.1 | 4.0 | 48.7 |

(a) Top 10 source countries based on original estimates.

(b) United Kingdom, Channel Islands and Isle of Man.

'What if....? Future scenarios

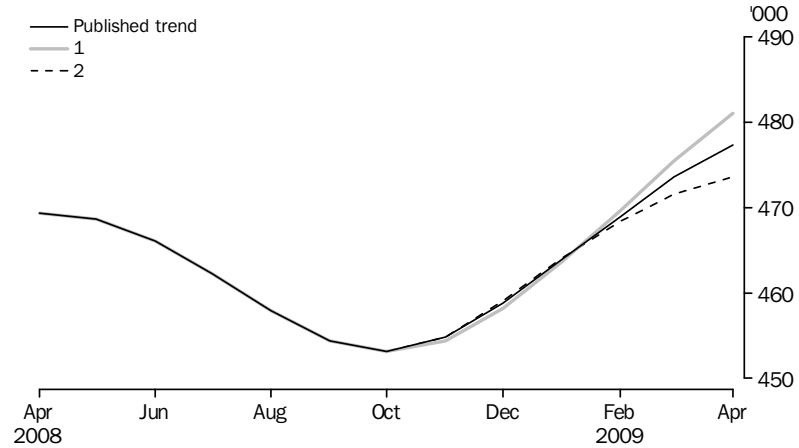
The most recent trend estimates for short-term visitor arrivals are likely to be revised when the next month's seasonally adjusted estimates become available. To assist in analysing these movement trends, the approximate effects of two possible scenarios on the previous trend estimate of short-term visitor arrivals is presented:

- 1 The May seasonally adjusted estimate of visitor arrivals is 2.8% higher than April.
- 2 The May seasonally adjusted estimate of visitor arrivals is 2.8% lower than April.

MAIN FEATURES *continued*

'What if....? Future scenarios *continued*

WHAT IF...? REVISIONS TO STVA TREND ESTIMATES, Australia

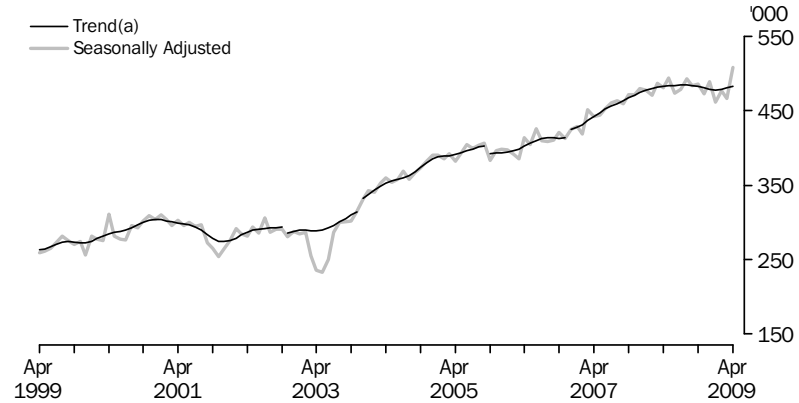


The figure of 2.8% for visitor arrivals represents the average absolute monthly percentage change for visitor arrivals over the last ten years. For further information on the effect of new seasonally adjusted estimates on short-term visitor arrival trend estimates see paragraph 27 of the Explanatory Notes.

SHORT-TERM RESIDENT DEPARTURES

In trend terms in April 2009, short-term resident departures (483,000 movements) increased 0.5% compared with March 2009 (480,700 movements). Short-term resident departures are currently marginally higher than in April 2008.

SHORT-TERM RESIDENT DEPARTURES, Australia



(a) Breaks in trend series — see Explanatory Notes, paragraph 25.

MAIN FEATURES *continued*

SHORT-TERM RESIDENT DEPARTURES *continued*

The following table presents the top ten destinations (based on original estimates) for short-term resident departures during April 2009. When trend estimates for short-term resident departures for April 2009 and April 2008 were compared, the highest percentage increase was recorded by Indonesia (29.1%) while the highest percentage decrease was recorded by Thailand (14.9%).

SHORT-TERM RESIDENT DEPARTURES, Australia(a)—April 2009

| | Trend | Seasonally Adjusted | Original | Mar 09 to Apr 09 | Apr 08 to Apr 09 |
|--------------------------|-------|------------------------|----------|---------------------|---------------------|
| | '000 | '000 | '000 | Trend % change | Trend % change |
| New Zealand | 80.9 | 81.6 | 86.1 | 0.2 | 7.5 |
| United States of America | 36.3 | 48.2 | 49.1 | -0.2 | -11.0 |
| Indonesia | 39.3 | 38.8 | 36.6 | 1.6 | 29.1 |
| Thailand | 30.9 | 31.3 | 34.6 | 0.3 | -14.9 |
| UK, Cls & IOM(b) | 34.8 | 35.4 | 33.2 | 0.9 | -1.2 |
| China | 22.3 | 21.9 | 26.2 | -1.2 | -4.5 |
| Malaysia | 18.3 | 21.3 | 20.4 | 3.3 | 17.6 |
| Singapore | 18.2 | 19.0 | 19.4 | 0.3 | 0.4 |
| Fiji | 20.0 | 20.1 | 18.8 | 0.1 | 2.1 |
| Hong Kong | 16.0 | 17.2 | 18.7 | -1.3 | -12.3 |

(a) Top 10 destination countries based on original estimates.

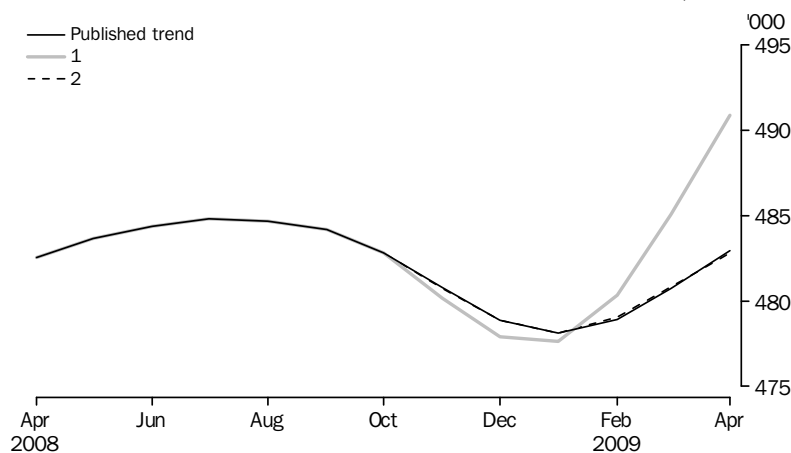
(b) United Kingdom, Channel Islands and Isle of Man.

'What if....? Future scenarios

The most recent trend estimates for short-term resident departures are likely to be revised when the next month's seasonally adjusted estimates become available. To assist in analysing these movement trends, the approximate effects of two possible scenarios on the previous trend estimate of short-term resident departures is presented:

- 1 The May seasonally adjusted estimate of resident departures is 2.9% higher than April.
- 2 The May seasonally adjusted estimate of resident departures is 2.9% lower than April.

WHAT IF...? REVISIONS TO STRD TREND ESTIMATES, Australia



MAIN FEATURES *continued*

'What if....? Future scenarios continued

The figure of 2.9% for resident departures represents the average absolute monthly percentage change for resident departures over the last ten years. For further information on the effect of new seasonally adjusted estimates on short-term resident departure trend estimates see paragraph 27 of the Explanatory Notes.

PERMANENT AND LONG-TERM MOVEMENTS

Statistics on overseas arrivals and departures relate to the number of movements of travellers rather than the number of travellers. Care should be taken when using permanent and long-term movements data as it is known that some individuals who travel multiple times in a year are counted each time they cross Australia's borders (see paragraph 5 of the Explanatory Notes). Permanent and long-term movements in this publication are not an appropriate source of migration statistics. For further information refer to *Australian Demographic Statistics* (cat. no. 3101.0) and *Information Paper: Statistical Implications of Improved Methods for Estimating Net Overseas Migration, Australia, 2007* (cat. no. 3107.0.55.005).

There were 12,050 permanent (settler) arrivals to Australia during April 2009, a decrease of 3.6% compared with April 2008 (12,500 movements). People born in New Zealand accounted for the largest proportion of settlers (14.2%), followed by people born in the UK, CIs & IOM (13.9%), India (11.9%), and China (9.9%).

There were 7,410 Australian residents departing permanently from Australia during April 2009, an increase of 12.5% compared with April 2008 (6,590 movements).

STATISTICAL SIGNIFICANCE

The above presentation of movements in estimates does not take into account whether the change in movement is statistically significant. Care should be taken when interpreting the impact of numeric and/or percentage change. Please see the Standard Errors section of this issue for more detail.

TOTAL MOVEMENT, ARRIVALS—Category of Movement

| | PERMANENT | | LONG-TERM | | Total permanent and long-term arrivals | SHORT-TERM(a) | | | | Total arrivals(a) |
|------------------------|-----------|-------------------------|----------------------|-------------------------|--|------------------------------------|---|------------------------------------|----------|----------------------|
| | Settlers | Australian residents | Overseas visitors | Australian residents | | Overseas visitors (Original) | Overseas visitors (Seasonally Adjusted)(b) | Overseas visitors (Trend)(c) | Total | |
| | | | | | | | | | | |
| Calendar years | | | | | | | | | | |
| 2006 | 133 880 | 107 040 | 238 570 | 479 480 | 4 898.6 | 5 532.4 | .. | .. | 10 910.5 | |
| 2007 | 141 650 | 108 510 | 285 570 | 535 730 | 5 403.8 | 5 644.1 | .. | .. | 11 583.6 | |
| 2008 | 161 520 | 113 750 | 358 800 | 634 070 | 5 811.3 | 5 585.8 | .. | .. | 12 031.2 | |
| Financial years | | | | | | | | | | |
| 2005–06 | 131 590 | 103 900 | 221 920 | 457 410 | 4 790.1 | 5 484.1 | .. | .. | 10 731.6 | |
| 2006–07 | 140 150 | 110 040 | 263 300 | 513 490 | 5 114.6 | 5 641.2 | .. | .. | 11 269.3 | |
| 2007–08 | 149 370 | 110 830 | 321 850 | 582 040 | 5 692.5 | 5 629.4 | .. | .. | 11 903.9 | |
| 2008 | | | | | | | | | | |
| February | 13 420 | 8 980 | 51 190 | 73 590 | 411.1 | 543.5 | 468.2 | 468.1 | 1 028.2 | |
| March | 14 660 | 9 870 | 27 670 | 52 200 | 425.8 | 513.7 | 465.0 | 468.9 | 991.8 | |
| April | 12 500 | 7 640 | 22 960 | 43 100 | 456.1 | 424.1 | 472.0 | 469.4 | 923.4 | |
| May | 13 180 | 7 170 | 19 670 | 40 010 | 420.3 | 380.9 | 476.0 | 468.6 | 841.2 | |
| June | 13 050 | 8 640 | 24 500 | 46 190 | 445.2 | 382.7 | 462.0 | 466.1 | 874.0 | |
| July | 11 460 | 8 160 | 44 860 | 64 480 | 554.4 | 531.6 | 495.4 | 462.2 | 1 150.5 | |
| August | 15 460 | 8 780 | 26 560 | 50 800 | 486.3 | 420.2 | 457.1 | 457.9 | 957.2 | |
| September | 13 920 | 9 100 | 24 990 | 48 000 | 504.1 | 402.2 | 447.8 | 454.4 | 954.4 | |
| October | 13 700 | 8 950 | 29 140 | 51 790 | 614.2 | 456.0 | 454.3 | 453.1 | 1 122.0 | |
| November | 14 010 | 10 000 | 25 070 | 49 070 | 437.3 | 473.3 | 451.7 | 454.8 | 959.7 | |
| December | 13 200 | 17 480 | 20 520 | 51 200 | 362.8 | 611.4 | 465.8 | 458.8 | 1 025.4 | |
| 2009 | | | | | | | | | | |
| January | 14 210 | 9 800 | 51 750 | 75 760 | 700.0 | 458.3 | 451.2 | 463.9 | 1 234.0 | |
| February | 13 960 | 8 900 | 61 120 | 83 990 | 405.1 | 504.0 | 478.1 | 468.9 | 993.1 | |
| March | 13 660 | 9 200 | 30 570 | 53 420 | 406.5 | 488.6 | 474.3 | 473.6 | 948.6 | |
| April | 12 050 | 9 340 | 27 800 | 49 180 | 471.2 | 455.6 | 478.7 | 477.3 | 976.0 | |

.. not applicable

(a) Figures for short-term movement are based on a sample and are subject to sampling error. See paragraphs 10 and 11 of Explanatory Notes for more detail.

(b) For information on seasonally adjusted estimates see paragraphs 18 to 22 of Explanatory Notes.

(c) For information on trend estimates see paragraphs 23 to 25 of Explanatory Notes.

TOTAL MOVEMENT, DEPARTURES—Category of Movement

| | PERMANENT | | LONG-TERM | | Total permanent and long-term departures | SHORT-TERM (a) | | | | Total departures (a) |
|------------------------|-------------------------|-------------------------|----------------------|---------------------------------------|--|---|--|----------------------|----------|-------------------------|
| | Australian residents | Australian residents | Overseas visitors | Australian residents (Original) | | Australian residents (Seasonally Adjusted) (b) | Australian residents (Trend) (c) | Overseas visitors | | |
| | no. | no. | no. | '000 | | '000 | '000 | '000 | '000 | |
| Calendar years | | | | | | | | | | |
| 2006 | 69 400 | 101 210 | 94 930 | 265 540 | 4 940.6 | .. | .. | 5 538.1 | 10 744.2 | |
| 2007 | 74 960 | 102 250 | 113 700 | 290 910 | 5 462.3 | .. | .. | 5 702.9 | 11 456.1 | |
| 2008 | 79 420 | 100 130 | 142 060 | 321 620 | 5 808.1 | .. | .. | 5 610.4 | 11 740.1 | |
| Financial years | | | | | | | | | | |
| 2005–06 | 67 850 | 98 110 | 92 180 | 258 140 | 4 834.9 | .. | .. | 5 516.2 | 10 609.3 | |
| 2006–07 | 72 100 | 101 610 | 101 490 | 275 200 | 5 127.1 | .. | .. | 5 654.0 | 11 056.4 | |
| 2007–08 | 76 920 | 102 070 | 124 010 | 303 000 | 5 699.5 | .. | .. | 5 670.0 | 11 672.5 | |
| 2008 | | | | | | | | | | |
| February | 5 730 | 7 930 | 9 070 | 22 730 | 365.7 | 471.0 | 480.2 | 492.6 | 881.1 | |
| March | 6 850 | 9 160 | 9 700 | 25 710 | 459.2 | 487.0 | 481.7 | 517.7 | 1 002.5 | |
| April | 6 590 | 8 750 | 8 290 | 23 630 | 466.5 | 481.3 | 482.6 | 463.0 | 953.1 | |
| May | 5 730 | 7 740 | 7 880 | 21 360 | 488.5 | 494.0 | 483.6 | 408.0 | 917.9 | |
| June | 5 200 | 6 730 | 12 570 | 24 500 | 531.5 | 474.0 | 484.4 | 400.0 | 956.0 | |
| July | 6 430 | 8 000 | 11 260 | 25 700 | 483.5 | 479.3 | 484.8 | 471.9 | 981.1 | |
| August | 7 410 | 9 770 | 9 660 | 26 850 | 485.4 | 493.0 | 484.7 | 480.0 | 992.3 | |
| September | 5 750 | 6 590 | 10 440 | 22 790 | 575.7 | 484.4 | 484.2 | 357.6 | 956.1 | |
| October | 6 000 | 7 090 | 9 710 | 22 800 | 458.0 | 486.3 | 482.8 | 434.6 | 915.4 | |
| November | 5 760 | 6 660 | 15 820 | 28 240 | 433.5 | 472.4 | 480.8 | 499.7 | 961.4 | |
| December | 7 460 | 6 690 | 25 610 | 39 750 | 642.6 | 489.4 | 478.9 | 500.7 | 1 183.0 | |
| 2009 | | | | | | | | | | |
| January | 11 040 | 11 030 | 16 220 | 38 290 | 409.6 | 461.7 | 478.1 | 594.0 | 1 041.9 | |
| February | 5 620 | 5 420 | 11 300 | 22 330 | 363.1 | 477.0 | 478.9 | 458.8 | 844.3 | |
| March | 6 600 | 6 300 | 11 650 | 24 550 | 430.1 | 466.3 | 480.7 | 497.3 | 951.9 | |
| April | 7 410 | 6 900 | 11 890 | 26 210 | 503.9 | 508.4 | 483.0 | 492.0 | 1 022.1 | |

.. not applicable

(a) Figures for short-term movement are based on a sample and are subject to sampling error. See paragraphs 10 and 11 of Explanatory Notes for more detail.

(b) For information on seasonally adjusted estimates see paragraphs 18 to 22 of Explanatory Notes.

(c) For information on trend estimates see paragraphs 23 to 25 of Explanatory Notes.

SHORT-TERM MOVEMENT(a), VISITOR ARRIVALS—Country of Residence(b): Trend(c)

| Country of residence | 2008 | | | | | | 2009 | | | |
|---|--------------|--------------|--------------|--------------|--------------|--------------|--------------|--------------|--------------|--------------|
| | Jul | Aug | Sep | Oct | Nov | Dec | Jan | Feb | Mar | Apr |
| | '000 | '000 | '000 | '000 | '000 | '000 | '000 | '000 | '000 | '000 |
| OCEANIA AND ANTARCTICA— | | | | | | | | | | |
| Fiji | 2.5 | 2.5 | 2.5 | 2.5 | 2.5 | 2.5 | 2.5 | 2.5 | 2.5 | 2.4 |
| New Caledonia | 3.8 | 3.8 | 3.9 | 3.9 | 3.9 | 3.8 | 3.8 | 3.7 | 3.7 | 3.7 |
| New Zealand | 91.4 | 91.1 | 91.5 | 92.5 | 93.8 | 94.8 | 95.3 | 95.4 | 95.3 | 94.8 |
| Papua New Guinea | 3.3 | 3.4 | 3.5 | 3.5 | 3.5 | 3.6 | 3.6 | 3.6 | 3.6 | 3.5 |
| <i>Total(d)</i> | 104.6 | 104.5 | 104.9 | 105.9 | 107.2 | 108.2 | 108.5 | 108.5 | 108.4 | 107.8 |
| NORTH-WEST EUROPE— | | | | | | | | | | |
| Austria | 1.5 | 1.5 | 1.4 | 1.4 | 1.4 | 1.4 | 1.4 | 1.4 | 1.4 | 1.4 |
| Denmark | 1.9 | 1.9 | 2.0 | 2.0 | 2.0 | 2.0 | 1.9 | 2.0 | 2.0 | 2.0 |
| France | 7.2 | 7.2 | 7.3 | 7.3 | 7.2 | 7.3 | 7.3 | 7.3 | 7.4 | 7.4 |
| Germany | 12.7 | 12.7 | 12.8 | 12.9 | 13.0 | 13.0 | 13.0 | 13.1 | 13.1 | 13.2 |
| Ireland | 5.7 | 5.7 | 5.6 | 5.6 | 5.6 | 5.6 | 5.6 | 5.7 | 5.8 | 5.9 |
| Netherlands | 4.6 | 4.5 | 4.5 | 4.4 | 4.4 | 4.4 | 4.3 | 4.2 | 4.2 | 4.2 |
| Norway | 1.4 | 1.4 | 1.4 | 1.4 | 1.4 | 1.4 | 1.4 | 1.4 | 1.4 | 1.4 |
| Sweden | 2.9 | 2.8 | 2.8 | 2.7 | 2.7 | 2.7 | 2.7 | 2.7 | 2.7 | 2.6 |
| Switzerland | 3.4 | 3.3 | 3.3 | 3.2 | 3.2 | 3.2 | 3.3 | 3.4 | 3.4 | 3.5 |
| UK, Cls & IOM | 55.6 | 54.8 | 54.3 | 54.0 | 54.1 | 54.2 | 54.5 | 54.9 | 55.2 | 55.6 |
| <i>Total(d)</i> | 99.2 | 98.3 | 97.6 | 97.1 | 97.1 | 97.3 | 97.7 | 98.3 | 98.9 | 99.5 |
| SOUTHERN AND EASTERN EUROPE— | | | | | | | | | | |
| Italy | 4.4 | 4.3 | 4.2 | 4.2 | 4.2 | 4.2 | 4.3 | 4.4 | 4.5 | 4.6 |
| Spain | 1.8 | 1.8 | 1.8 | 1.7 | 1.7 | 1.7 | 1.7 | 1.7 | 1.8 | 1.8 |
| <i>Total(d)</i> | 11.8 | 11.7 | 11.7 | 11.7 | 11.7 | 11.7 | 11.7 | 11.7 | 11.8 | 11.8 |
| NORTH AFRICA AND THE MIDDLE EAST— | | | | | | | | | | |
| Israel | 1.3 | 1.4 | 1.4 | 1.3 | 1.3 | 1.3 | 1.2 | 1.2 | 1.3 | 1.3 |
| United Arab Emirates | 3.2 | 3.3 | 3.4 | 3.5 | 3.7 | 3.9 | 4.1 | 4.3 | 4.5 | 4.7 |
| <i>Total(d)</i> | 8.3 | 8.3 | 8.4 | 8.6 | 8.8 | 9.0 | 9.2 | 9.4 | 9.7 | 9.9 |
| SOUTH-EAST ASIA— | | | | | | | | | | |
| Indonesia | 8.0 | 8.0 | 8.0 | 7.9 | 7.7 | 7.5 | 7.5 | 7.6 | 7.6 | 7.8 |
| Malaysia | 14.0 | 13.9 | 14.0 | 14.3 | 14.9 | 15.6 | 16.4 | 17.2 | 18.0 | 18.5 |
| Philippines | 3.7 | 3.7 | 3.8 | 3.8 | 3.9 | 3.9 | 4.0 | 4.0 | 4.0 | 3.9 |
| Singapore | 22.9 | 22.9 | 22.8 | 22.7 | 22.6 | 22.9 | 23.3 | 23.9 | 24.4 | 24.9 |
| Thailand | 6.8 | 6.6 | 6.4 | 6.3 | 6.4 | 6.5 | 6.6 | 6.6 | 6.6 | 6.6 |
| <i>Total(d)</i> | 59.9 | 59.7 | 59.5 | 59.4 | 59.7 | 60.7 | 62.1 | 63.6 | 65.1 | 66.4 |
| NORTH-EAST ASIA— | | | | | | | | | | |
| China (excludes SARs and Taiwan Province) | 28.3 | 26.9 | 26.3 | 27.1 | 28.9 | 30.9 | 32.9 | 34.4 | 35.4 | 36.1 |
| Hong Kong (SAR of China) | 11.9 | 11.8 | 11.8 | 11.9 | 12.3 | 12.8 | 13.3 | 13.8 | 14.2 | 14.5 |
| Japan | 38.2 | 37.6 | 36.5 | 35.1 | 33.8 | 32.9 | 32.6 | 32.7 | 33.0 | 33.4 |
| Korea | 19.4 | 18.7 | 17.5 | 16.2 | 15.2 | 14.8 | 14.8 | 15.2 | 15.6 | 16.0 |
| Taiwan | 6.3 | 6.4 | 6.6 | 6.9 | 7.3 | 7.8 | 8.2 | 8.6 | 8.9 | 9.3 |
| <i>Total(d)</i> | 104.5 | 101.6 | 99.1 | 97.7 | 98.0 | 99.7 | 102.3 | 105.0 | 107.5 | 109.7 |
| SOUTHERN AND CENTRAL ASIA— | | | | | | | | | | |
| India | 9.9 | 9.8 | 9.8 | 9.8 | 9.9 | 10.1 | 10.3 | 10.5 | 10.6 | 10.7 |
| <i>Total(d)</i> | 12.3 | 12.3 | 12.3 | 12.3 | 12.5 | 12.7 | 12.9 | 13.2 | 13.3 | 13.5 |
| AMERICAS— | | | | | | | | | | |
| Canada | 10.7 | 10.6 | 10.4 | 10.2 | 10.1 | 10.0 | 9.9 | 9.9 | 9.9 | 9.8 |
| United States of America | 37.7 | 37.7 | 37.6 | 37.4 | 37.2 | 37.1 | 37.0 | 36.9 | 36.8 | 36.7 |
| <i>Total(d)</i> | 53.5 | 53.3 | 53.0 | 52.6 | 52.4 | 52.3 | 52.3 | 52.2 | 52.2 | 52.1 |
| SUB-SAHARAN AFRICA— | | | | | | | | | | |
| South Africa | 6.0 | 5.9 | 5.8 | 5.7 | 5.5 | 5.4 | 5.2 | 5.1 | 4.9 | 4.8 |
| <i>Total(d)</i> | 8.1 | 8.0 | 7.9 | 7.7 | 7.5 | 7.2 | 7.1 | 6.9 | 6.7 | 6.6 |
| Total(d)(e) | 462.2 | 457.9 | 454.4 | 453.1 | 454.8 | 458.8 | 463.9 | 468.9 | 473.6 | 477.3 |

(a) Figures for short-term movement are based on a sample and are subject to sampling error. See paragraphs 10 and 11 of Explanatory Notes for more detail.

(b) For information on country classification see paragraphs 7 and 8 of Explanatory Notes.

(c) For information on trend estimates see paragraphs 23 to 25 of Explanatory Notes.

(d) Includes other countries in the region.

(e) Includes not stated/inadequately described.

SHORT-TERM MOVEMENT(a), VISITOR ARRIVALS—Country of Residence(b): **Seasonally Adjusted(c)**

| Country of residence | 2008 | | | | | | 2009 | | | |
|---|--------------|--------------|--------------|--------------|--------------|--------------|--------------|--------------|--------------|--------------|
| | Jul | Aug | Sep | Oct | Nov | Dec | Jan | Feb | Mar | Apr |
| | '000 | '000 | '000 | '000 | '000 | '000 | '000 | '000 | '000 | '000 |
| OCEANIA AND ANTARCTICA— | | | | | | | | | | |
| Fiji | 2.8 | 2.5 | 2.1 | 2.6 | 2.9 | 2.6 | 2.3 | 2.6 | 2.4 | 2.6 |
| New Caledonia | 4.3 | 3.7 | 3.9 | 3.6 | 3.9 | 4.2 | 3.8 | 3.4 | 3.6 | 3.8 |
| New Zealand | 91.4 | 88.2 | 88.7 | 97.6 | 92.9 | 94.1 | 96.8 | 94.6 | 96.5 | 93.3 |
| Papua New Guinea | 3.5 | 3.2 | 3.3 | 3.8 | 3.7 | 3.3 | 3.4 | 4.0 | 3.5 | 3.4 |
| <i>Total(d)</i> | 107.9 | 101.2 | 101.4 | 110.9 | 107.1 | 108.0 | 109.1 | 108.0 | 109.4 | 106.5 |
| NORTH-WEST EUROPE— | | | | | | | | | | |
| Austria | 1.6 | 1.5 | 1.3 | 1.4 | 1.3 | 1.6 | 1.4 | 1.4 | 1.4 | 1.5 |
| Denmark | 1.9 | 2.1 | 1.9 | 2.0 | 1.8 | 2.1 | 2.0 | 1.8 | 1.9 | 2.1 |
| France | 7.6 | 6.8 | 7.4 | 7.4 | 7.0 | 7.4 | 7.1 | 7.4 | 7.3 | 7.5 |
| Germany | 15.9 | 12.7 | 12.8 | 12.6 | 12.7 | 14.0 | 12.7 | 13.2 | 12.1 | 14.0 |
| Ireland | 5.6 | 5.8 | 5.6 | 5.8 | 5.4 | 5.5 | 5.5 | 6.0 | 5.8 | 6.0 |
| Netherlands | 4.5 | 4.3 | 4.3 | 4.6 | 4.6 | 4.6 | 4.1 | 4.2 | 3.9 | 4.5 |
| Norway | 1.4 | 1.3 | 1.4 | 1.5 | 1.4 | 1.4 | 1.3 | 1.3 | 1.5 | 1.3 |
| Sweden | 2.8 | 3.0 | 2.7 | 2.7 | 2.6 | 2.8 | 2.7 | 2.6 | 2.6 | 2.7 |
| Switzerland | 3.5 | 3.5 | 3.2 | 3.1 | 3.2 | 3.2 | 3.4 | 3.3 | 3.3 | 3.7 |
| UK, CIs & IOM | 53.2 | 54.5 | 56.1 | 54.8 | 52.3 | 54.6 | 52.3 | 58.4 | 54.0 | 55.7 |
| <i>Total(d)</i> | 100.2 | 97.8 | 98.7 | 98.1 | 94.5 | 99.4 | 94.5 | 102.0 | 96.1 | 101.4 |
| SOUTHERN AND EASTERN EUROPE— | | | | | | | | | | |
| Italy | 9.9 | 4.1 | 4.3 | 4.1 | 4.2 | 4.2 | 4.1 | 4.7 | 4.5 | 4.5 |
| Spain | 4.1 | 1.6 | 1.9 | 1.7 | 1.5 | 1.8 | 1.6 | 1.8 | 1.8 | 1.8 |
| <i>Total(d)</i> | 23.8 | 11.8 | 11.8 | 11.6 | 11.5 | 11.8 | 11.4 | 12.2 | 11.8 | 11.6 |
| NORTH AFRICA AND THE MIDDLE EAST— | | | | | | | | | | |
| Israel | 1.1 | 1.3 | 1.5 | 1.4 | 1.3 | 1.3 | 1.0 | 1.3 | 1.3 | 1.4 |
| United Arab Emirates | 3.3 | 2.8 | 3.5 | 3.7 | 3.7 | 4.0 | 4.1 | 4.2 | 4.6 | 4.9 |
| <i>Total(d)</i> | 8.1 | 7.1 | 9.1 | 9.2 | 8.6 | 9.0 | 8.8 | 9.6 | 9.7 | 10.2 |
| SOUTH-EAST ASIA— | | | | | | | | | | |
| Indonesia | 7.7 | 8.2 | 9.5 | 6.5 | 7.5 | 7.9 | 7.3 | 7.5 | 7.4 | 8.2 |
| Malaysia | 14.4 | 14.5 | 11.4 | 15.0 | 16.4 | 15.6 | 15.0 | 17.5 | 18.3 | 19.3 |
| Philippines | 6.7 | 4.0 | 3.6 | 3.7 | 3.9 | 4.0 | 4.2 | 4.0 | 3.8 | 3.9 |
| Singapore | 23.6 | 23.6 | 22.3 | 22.9 | 21.7 | 23.0 | 23.3 | 23.8 | 24.6 | 25.4 |
| Thailand | 6.2 | 6.7 | 6.6 | 5.8 | 6.5 | 6.6 | 6.2 | 7.5 | 6.5 | 6.1 |
| <i>Total(d)</i> | 63.7 | 61.5 | 57.9 | 58.3 | 60.0 | 61.1 | 60.4 | 64.8 | 64.9 | 67.7 |
| NORTH-EAST ASIA— | | | | | | | | | | |
| China (excludes SARs and Taiwan Province) | 29.0 | 25.3 | 26.4 | 26.6 | 27.7 | 31.3 | 33.7 | 34.7 | 38.8 | 32.2 |
| Hong Kong (SAR of China) | 11.3 | 11.3 | 11.9 | 12.1 | 12.1 | 13.0 | 12.2 | 15.1 | 14.1 | 14.3 |
| Japan | 39.1 | 40.3 | 35.6 | 34.3 | 34.3 | 33.9 | 28.3 | 34.4 | 33.7 | 34.3 |
| Korea | 20.9 | 19.2 | 17.2 | 16.6 | 13.7 | 15.2 | 13.0 | 16.0 | 16.5 | 16.3 |
| Taiwan | 6.0 | 5.9 | 6.3 | 6.3 | 7.9 | 8.6 | 8.6 | 7.4 | 8.1 | 10.8 |
| <i>Total(d)</i> | 106.5 | 102.2 | 97.7 | 96.4 | 96.3 | 102.4 | 96.2 | 108.2 | 111.6 | 108.3 |
| SOUTHERN AND CENTRAL ASIA— | | | | | | | | | | |
| India | 9.9 | 10.4 | 10.0 | 8.4 | 10.3 | 10.3 | 10.3 | 10.9 | 10.4 | 10.5 |
| <i>Total(d)</i> | 12.3 | 13.0 | 12.5 | 10.9 | 12.8 | 13.0 | 12.9 | 13.4 | 13.2 | 13.3 |
| AMERICAS | | | | | | | | | | |
| Canada | 11.8 | 10.5 | 10.0 | 10.0 | 10.5 | 10.0 | 9.6 | 10.1 | 9.7 | 9.9 |
| United States of America | 42.3 | 38.6 | 36.1 | 36.6 | 38.3 | 38.2 | 35.6 | 37.1 | 36.6 | 37.0 |
| <i>Total(d)</i> | 64.2 | 54.3 | 51.1 | 51.3 | 53.7 | 53.6 | 50.5 | 52.9 | 51.8 | 52.3 |
| SUB-SAHARAN AFRICA— | | | | | | | | | | |
| South Africa | 6.1 | 6.3 | 5.6 | 5.6 | 5.3 | 5.5 | 5.4 | 5.2 | 4.2 | 5.1 |
| <i>Total(d)</i> | 8.7 | 8.3 | 7.6 | 7.6 | 7.2 | 7.6 | 7.3 | 7.0 | 5.7 | 7.2 |
| Total(d)(e) | 495.4 | 457.1 | 447.8 | 454.3 | 451.7 | 465.8 | 451.2 | 478.1 | 474.3 | 478.7 |

(a) Figures for short-term movement are based on a sample and are subject to sampling error. See paragraphs 10 and 11 of Explanatory Notes for more detail.

(b) For information on country classification see paragraphs 7 and 8 of Explanatory Notes.

(c) For information on seasonally adjusted estimates see paragraphs 18 to 22 of Explanatory Notes.

(d) Includes other countries in the region.

(e) Includes not stated/inadequately described.

SHORT-TERM MOVEMENT(a), VISITOR ARRIVALS—Country of Residence(b): Original

| | CALENDAR YEAR | | FINANCIAL YEAR | | 2008 | | 2009 | | | |
|---|----------------|----------------|----------------|----------------|--------------|--------------|--------------|--------------|--------------|--------------|
| | 2007 | 2008 | 2006-07 | 2007-08 | Nov | Dec | Jan | Feb | Mar | Apr |
| <i>Country of residence</i> | '000 | '000 | '000 | '000 | '000 | '000 | '000 | '000 | '000 | '000 |
| OCEANIA AND ANTARCTICA— | | | | | | | | | | |
| Fiji | 26.3 | 29.7 | 29.0 | 26.9 | 3.0 | 4.7 | 2.1 | 2.3 | 2.1 | 2.7 |
| New Caledonia | 41.4 | 45.8 | 40.7 | 43.5 | 4.0 | 4.7 | 7.5 | 4.1 | 3.0 | 3.5 |
| New Zealand | 1 138.0 | 1 113.3 | 1 115.1 | 1 121.3 | 90.2 | 101.0 | 73.2 | 66.6 | 81.5 | 98.8 |
| Papua New Guinea | 33.2 | 38.8 | 32.1 | 33.9 | 3.9 | 4.3 | 3.4 | 2.7 | 2.8 | 3.7 |
| <i>Total(c)</i> | 1 277.5 | 1 272.1 | 1 254.8 | 1 265.1 | 105.1 | 120.0 | 89.1 | 78.5 | 92.8 | 112.0 |
| NORTH-WEST EUROPE— | | | | | | | | | | |
| Austria | 17.8 | 17.1 | 19.1 | 16.7 | 1.6 | 2.3 | 1.7 | 1.8 | 1.4 | 1.0 |
| Denmark | 22.7 | 24.0 | 22.7 | 23.8 | 2.0 | 3.5 | 2.8 | 2.9 | 2.2 | 1.3 |
| France | 73.7 | 85.7 | 69.9 | 78.0 | 7.4 | 9.6 | 7.5 | 8.2 | 6.6 | 6.2 |
| Germany | 151.6 | 160.7 | 148.7 | 155.2 | 14.0 | 18.9 | 13.1 | 17.2 | 14.8 | 11.0 |
| Ireland | 67.3 | 68.2 | 63.3 | 69.2 | 5.5 | 9.8 | 5.9 | 5.9 | 6.5 | 4.7 |
| Netherlands | 51.2 | 54.6 | 51.1 | 53.1 | 5.4 | 7.6 | 4.4 | 5.0 | 4.1 | 3.2 |
| Norway | 16.2 | 17.4 | 16.2 | 17.0 | 1.4 | 2.7 | 1.5 | 2.1 | 1.7 | 1.1 |
| Sweden | 35.1 | 34.4 | 35.1 | 35.4 | 3.2 | 6.4 | 3.7 | 4.1 | 2.9 | 1.9 |
| Switzerland | 41.9 | 40.0 | 42.8 | 41.9 | 4.0 | 5.5 | 4.6 | 3.9 | 3.4 | 3.0 |
| UK, CIs & IOM | 688.9 | 672.1 | 733.3 | 686.3 | 61.2 | 100.8 | 59.2 | 79.3 | 71.6 | 54.0 |
| <i>Total(c)</i> | 1 194.8 | 1 201.9 | 1 229.4 | 1 204.6 | 108.7 | 170.7 | 106.6 | 133.1 | 117.8 | 89.1 |
| SOUTHERN AND EASTERN EUROPE— | | | | | | | | | | |
| Italy | 53.6 | 58.7 | 53.3 | 52.8 | 4.2 | 7.4 | 4.3 | 4.4 | 3.5 | 2.5 |
| Spain | 20.7 | 26.2 | 19.5 | 22.9 | 1.8 | 2.1 | 1.4 | 1.8 | 1.5 | 1.2 |
| <i>Total(c)</i> | 139.4 | 157.2 | 134.0 | 141.7 | 13.5 | 20.8 | 13.6 | 12.8 | 10.4 | 7.5 |
| NORTH AFRICA AND THE MIDDLE EAST— | | | | | | | | | | |
| Israel | 15.2 | 15.5 | 15.7 | 14.6 | 1.4 | 1.5 | 1.1 | 1.6 | 1.6 | 1.4 |
| United Arab Emirates | 33.8 | 41.1 | 29.3 | 36.9 | 2.7 | 4.1 | 3.2 | 3.2 | 3.2 | 3.4 |
| <i>Total(c)</i> | 87.5 | 100.2 | 82.7 | 92.6 | 7.0 | 9.9 | 7.5 | 9.1 | 8.3 | 7.5 |
| SOUTH-EAST ASIA— | | | | | | | | | | |
| Indonesia | 89.1 | 94.3 | 85.2 | 93.1 | 5.6 | 12.1 | 5.9 | 7.8 | 6.9 | 7.0 |
| Malaysia | 159.4 | 171.0 | 157.1 | 166.0 | 18.6 | 21.4 | 11.6 | 17.7 | 19.9 | 19.0 |
| Philippines | 42.4 | 46.9 | 41.3 | 42.7 | 3.6 | 4.3 | 3.4 | 3.6 | 4.2 | 5.4 |
| Singapore | 263.8 | 270.9 | 263.5 | 266.5 | 27.5 | 35.5 | 17.7 | 19.9 | 23.2 | 23.1 |
| Thailand | 83.0 | 79.5 | 77.1 | 84.2 | 4.8 | 6.5 | 5.0 | 5.9 | 7.8 | 10.1 |
| <i>Total(c)</i> | 682.5 | 714.6 | 664.0 | 701.1 | 63.9 | 84.7 | 47.6 | 60.3 | 66.5 | 68.9 |
| NORTH-EAST ASIA— | | | | | | | | | | |
| China (excludes SARs and Taiwan Province) | 357.6 | 356.4 | 338.4 | 375.2 | 29.1 | 31.7 | 54.5 | 46.9 | 34.2 | 30.8 |
| Hong Kong (SAR of China) | 147.0 | 144.0 | 153.1 | 146.7 | 9.8 | 16.5 | 15.2 | 13.7 | 13.1 | 18.6 |
| Japan | 573.0 | 457.3 | 610.2 | 521.2 | 38.7 | 37.2 | 26.1 | 38.0 | 42.0 | 27.7 |
| Korea | 253.3 | 218.3 | 270.8 | 236.2 | 14.6 | 16.0 | 18.3 | 16.6 | 15.8 | 14.4 |
| Taiwan | 92.7 | 77.6 | 92.3 | 85.0 | 6.0 | 7.5 | 9.9 | 8.7 | 7.9 | 11.1 |
| <i>Total(c)</i> | 1 426.8 | 1 257.7 | 1 467.7 | 1 368.0 | 98.8 | 109.2 | 124.3 | 124.4 | 113.3 | 102.9 |
| SOUTHERN AND CENTRAL ASIA— | | | | | | | | | | |
| India | 95.2 | 116.0 | 88.0 | 107.7 | 9.9 | 11.0 | 8.6 | 11.2 | 10.6 | 10.8 |
| <i>Total(c)</i> | 121.5 | 144.8 | 112.1 | 135.0 | 12.1 | 14.5 | 10.9 | 14.1 | 13.6 | 13.9 |
| AMERICAS— | | | | | | | | | | |
| Canada | 114.6 | 124.6 | 110.5 | 120.9 | 11.9 | 14.7 | 12.4 | 14.5 | 12.1 | 8.5 |
| United States of America | 459.7 | 454.4 | 455.4 | 454.5 | 39.8 | 44.3 | 33.6 | 44.6 | 40.9 | 33.2 |
| <i>Total(c)</i> | 628.8 | 644.2 | 615.7 | 632.9 | 56.5 | 66.7 | 52.6 | 65.3 | 59.0 | 46.7 |
| SUB-SAHARAN AFRICA— | | | | | | | | | | |
| South Africa | 63.4 | 68.5 | 60.3 | 65.8 | 5.7 | 11.4 | 3.9 | 4.4 | 5.5 | 5.3 |
| <i>Total(c)</i> | 84.9 | 92.7 | 80.6 | 88.1 | 7.6 | 15.0 | 6.0 | 6.4 | 7.0 | 7.2 |
| Total(c)(d) | 5 644.1 | 5 585.8 | 5 641.2 | 5 629.4 | 473.3 | 611.4 | 458.3 | 504.0 | 488.6 | 455.6 |

(a) Figures for short-term movement are based on a sample and are subject to sampling error. See paragraphs 10 and 11 of Explanatory Notes for more detail.

(b) For information on country classification see paragraphs 7 and 8 of Explanatory Notes.

(c) Includes other countries in the region.

(d) Includes not stated/inadequately described.

SHORT-TERM MOVEMENT(a), VISITOR ARRIVALS—Intended Length of Stay and Main Reason for Journey: **Original**

| | CALENDAR YEAR | | FINANCIAL YEAR | | 2008 | | 2009 | | | |
|--------------------------------|----------------|----------------|----------------|----------------|--------------|--------------|--------------|--------------|--------------|--------------|
| | 2007 | 2008 | 2006-07 | 2007-08 | Nov | Dec | Jan | Feb | Mar | Apr |
| | '000 | '000 | '000 | '000 | '000 | '000 | '000 | '000 | '000 | '000 |
| Intended length of stay | | | | | | | | | | |
| Under 1 week | 1 720.9 | 1 599.0 | 1 725.4 | 1 685.5 | 149.4 | 123.1 | 101.2 | 130.0 | 141.5 | 127.8 |
| 1 and under 2 weeks | 1 642.8 | 1 632.4 | 1 630.1 | 1 651.6 | 134.6 | 159.6 | 145.0 | 127.4 | 139.2 | 151.5 |
| 2 weeks and under 1 month | 1 119.4 | 1 125.1 | 1 145.7 | 1 098.6 | 85.4 | 182.6 | 82.7 | 90.8 | 96.8 | 89.5 |
| 1 and under 2 months | 457.2 | 463.5 | 454.3 | 461.1 | 36.0 | 81.0 | 41.4 | 44.0 | 40.6 | 30.9 |
| 2 and under 3 months | 163.9 | 167.6 | 161.7 | 166.2 | 17.7 | 21.3 | 16.8 | 14.8 | 13.6 | 12.1 |
| 3 and under 6 months | 234.8 | 255.1 | 229.4 | 244.1 | 25.4 | 23.5 | 24.4 | 30.2 | 22.7 | 19.0 |
| 6 and under 12 months | 305.1 | 343.0 | 294.8 | 322.2 | 24.7 | 20.3 | 46.8 | 66.9 | 34.2 | 24.8 |
| Total(b) | 5 644.1 | 5 585.8 | 5 641.2 | 5 629.4 | 473.3 | 611.4 | 458.3 | 504.0 | 488.6 | 455.6 |
| Main reason for journey | | | | | | | | | | |
| Convention/conference | 188.0 | 188.0 | 183.3 | 184.2 | 13.8 | 8.2 | 6.4 | 11.4 | 11.7 | 9.0 |
| Business | 650.5 | 654.2 | 640.7 | 664.6 | 58.0 | 34.8 | 43.1 | 50.8 | 57.4 | 43.6 |
| Visiting friends/relatives | 1 179.6 | 1 222.8 | 1 153.4 | 1 201.3 | 108.8 | 193.6 | 92.3 | 102.9 | 116.5 | 122.4 |
| Holiday | 2 826.8 | 2 654.7 | 2 896.1 | 2 754.1 | 235.7 | 318.6 | 223.7 | 223.9 | 231.3 | 215.6 |
| Employment | 169.3 | 180.9 | 163.8 | 180.1 | 15.0 | 16.2 | 18.5 | 15.8 | 14.9 | 14.2 |
| Education | 300.7 | 315.5 | 289.4 | 310.8 | 13.9 | 13.1 | 42.1 | 69.8 | 29.2 | 22.1 |
| Other & not stated(c) | 329.2 | 369.6 | 314.5 | 334.3 | 28.0 | 27.0 | 32.2 | 29.4 | 27.5 | 28.6 |
| Total | 5 644.1 | 5 585.8 | 5 641.2 | 5 629.4 | 473.3 | 611.4 | 458.3 | 504.0 | 488.6 | 455.6 |

(a) Figures for short-term movement are based on a sample and are subject to sampling error. See paragraphs 10 and 11 of Explanatory Notes for more detail.

(b) Includes not stated.

(c) Includes 'Exhibition' from July 1998.

SHORT-TERM MOVEMENT(a), RESIDENT DEPARTURES—Main Destinations(b): Trend(c)

| | 2008 | | | | | | 2009 | | | |
|---|--------------|--------------|--------------|--------------|--------------|--------------|--------------|--------------|--------------|--------------|
| | Jul | Aug | Sep | Oct | Nov | Dec | Jan | Feb | Mar | Apr |
| <i>Main destination</i> | '000 | '000 | '000 | '000 | '000 | '000 | '000 | '000 | '000 | '000 |
| OCEANIA AND ANTARCTICA— | | | | | | | | | | |
| Fiji | 19.7 | 19.7 | 19.8 | 19.8 | 19.8 | 19.8 | 19.8 | 19.9 | 19.9 | 20.0 |
| New Caledonia | 1.6 | 1.5 | 1.5 | 1.5 | 1.6 | 1.7 | 1.7 | 1.7 | 1.7 | 1.6 |
| New Zealand | 75.6 | 75.9 | 76.5 | 77.2 | 78.1 | 79.1 | 79.9 | 80.4 | 80.8 | 80.9 |
| Norfolk Island | 2.1 | 2.0 | 1.9 | 1.9 | 1.9 | 1.9 | 1.9 | 2.0 | 2.0 | 2.1 |
| Papua New Guinea | 5.2 | 5.2 | 5.2 | 5.2 | 5.2 | 5.3 | 5.4 | 5.5 | 5.6 | 5.7 |
| Vanuatu | 4.7 | 4.7 | 4.7 | 4.8 | 4.9 | 5.1 | 5.3 | 5.5 | 5.6 | 5.7 |
| <i>Total(d)</i> | 114.1 | 114.3 | 114.8 | 115.7 | 116.8 | 118.2 | 119.5 | 120.4 | 121.1 | 121.3 |
| NORTH-WEST EUROPE— | | | | | | | | | | |
| France | 8.0 | 8.1 | 8.1 | 7.9 | 7.6 | 7.1 | 6.6 | 6.3 | 6.1 | 5.9 |
| Germany | 5.8 | 5.9 | 5.8 | 5.7 | 5.5 | 5.3 | 5.1 | 5.0 | 5.0 | 5.0 |
| Ireland | 2.9 | 2.7 | 2.7 | 2.8 | 2.8 | 2.8 | 2.7 | 2.6 | 2.5 | 2.4 |
| Netherlands | 1.8 | 1.8 | 1.8 | 1.8 | 1.8 | 1.8 | 1.8 | 1.8 | 1.8 | 1.9 |
| UK, CIs & IOM | 34.9 | 34.6 | 34.4 | 34.2 | 34.0 | 33.9 | 34.0 | 34.2 | 34.5 | 34.8 |
| <i>Total(d)</i> | 59.1 | 58.8 | 58.4 | 57.9 | 57.1 | 56.3 | 55.7 | 55.4 | 55.4 | 55.5 |
| SOUTHERN AND EASTERN EUROPE— | | | | | | | | | | |
| Greece | 3.9 | 3.9 | 3.9 | 3.7 | 3.5 | 3.4 | 3.3 | 3.4 | 3.5 | 3.7 |
| Italy | 10.3 | 10.4 | 10.3 | 10.1 | 9.8 | 9.3 | 8.9 | 8.6 | 8.3 | 8.2 |
| Spain | 2.3 | 2.2 | 2.1 | 2.1 | 2.1 | 2.1 | 2.1 | 2.1 | 2.1 | 2.1 |
| <i>Total(d)</i> | 25.5 | 25.5 | 25.2 | 24.7 | 24.0 | 23.2 | 22.5 | 22.1 | 21.9 | 22.0 |
| NORTH AFRICA AND THE MIDDLE EAST— | | | | | | | | | | |
| Lebanon | 2.1 | 2.2 | 2.1 | 2.0 | 2.0 | 2.0 | 2.2 | 2.4 | 2.6 | 2.8 |
| Turkey | 2.1 | 2.3 | 2.4 | 2.4 | 2.3 | 2.0 | 1.8 | 1.6 | 1.5 | 1.4 |
| <i>Total(d)</i> | 15.0 | 15.3 | 15.5 | 15.4 | 15.1 | 14.7 | 14.4 | 14.3 | 14.4 | 14.4 |
| SOUTH-EAST ASIA— | | | | | | | | | | |
| Indonesia | 31.2 | 31.6 | 32.2 | 33.1 | 34.2 | 35.4 | 36.6 | 37.8 | 38.7 | 39.3 |
| Malaysia | 16.0 | 16.1 | 16.1 | 16.1 | 16.2 | 16.4 | 16.7 | 17.1 | 17.7 | 18.3 |
| Philippines | 8.3 | 8.5 | 8.5 | 8.6 | 8.6 | 8.7 | 8.9 | 9.0 | 9.2 | 9.3 |
| Singapore | 18.0 | 17.9 | 18.0 | 18.1 | 18.1 | 18.2 | 18.2 | 18.1 | 18.1 | 18.2 |
| Thailand | 34.7 | 33.5 | 32.4 | 31.7 | 31.3 | 31.1 | 30.8 | 30.8 | 30.8 | 30.9 |
| Viet Nam | 14.4 | 14.5 | 14.4 | 14.1 | 13.6 | 13.1 | 12.7 | 12.4 | 12.3 | 12.2 |
| <i>Total(d)</i> | 127.3 | 126.8 | 126.5 | 126.3 | 126.6 | 127.1 | 127.9 | 129.2 | 130.7 | 132.2 |
| NORTH-EAST ASIA— | | | | | | | | | | |
| China (excludes SARs and Taiwan Province) | 22.1 | 22.2 | 22.4 | 22.8 | 23.1 | 23.1 | 23.0 | 22.8 | 22.6 | 22.3 |
| Hong Kong (SAR of China) | 18.1 | 17.9 | 17.7 | 17.5 | 17.3 | 17.0 | 16.7 | 16.4 | 16.2 | 16.0 |
| Japan | 11.0 | 11.2 | 11.5 | 11.9 | 12.3 | 12.5 | 12.5 | 12.3 | 12.1 | 12.0 |
| Korea | 3.2 | 3.2 | 3.2 | 3.1 | 3.1 | 3.0 | 3.0 | 3.0 | 3.1 | 3.1 |
| Taiwan | 3.1 | 3.1 | 3.1 | 3.1 | 3.1 | 3.2 | 3.2 | 3.3 | 3.3 | 3.4 |
| <i>Total(d)</i> | 58.3 | 58.3 | 58.7 | 59.2 | 59.6 | 59.5 | 59.0 | 58.5 | 58.0 | 57.5 |
| SOUTHERN AND CENTRAL ASIA— | | | | | | | | | | |
| India | 11.3 | 11.4 | 11.5 | 11.4 | 11.2 | 11.0 | 11.0 | 11.2 | 11.4 | 11.7 |
| Sri Lanka | 1.9 | 2.0 | 2.0 | 2.1 | 2.2 | 2.2 | 2.2 | 2.2 | 2.2 | 2.2 |
| <i>Total(d)</i> | 17.2 | 17.4 | 17.4 | 17.3 | 17.1 | 17.0 | 17.1 | 17.3 | 17.7 | 18.2 |
| AMERICAS— | | | | | | | | | | |
| Canada | 8.4 | 8.2 | 8.1 | 8.1 | 8.0 | 7.9 | 7.8 | 7.6 | 7.5 | 7.4 |
| United States of America | 41.9 | 42.1 | 41.7 | 40.7 | 39.4 | 38.2 | 37.3 | 36.7 | 36.4 | 36.3 |
| <i>Total(d)</i> | 56.5 | 56.4 | 55.8 | 54.5 | 53.1 | 52.0 | 51.2 | 50.9 | 50.8 | 51.0 |
| SUB-SAHARAN AFRICA— | | | | | | | | | | |
| South Africa | 5.0 | 5.0 | 5.0 | 5.0 | 5.0 | 4.9 | 5.0 | 5.1 | 5.2 | 5.3 |
| <i>Total(d)</i> | 8.8 | 8.9 | 9.0 | 9.0 | 8.9 | 8.7 | 8.7 | 8.7 | 8.7 | 8.8 |
| Total(d)(e) | 484.8 | 484.7 | 484.2 | 482.8 | 480.8 | 478.9 | 478.1 | 478.9 | 480.7 | 483.0 |

(a) Figures for short-term movement are based on a sample and are subject to sampling error. See paragraphs 10 and 11 of Explanatory Notes for more detail.

(b) For information on country classification see paragraphs 7 to 9 of Explanatory Notes.

(c) For information on trend estimates see paragraphs 23 to 25 of Explanatory Notes.

(d) Includes other countries in the region.

(e) Includes not stated/inadequately described.

| Main destination | 2008 | | | | | | 2009 | | | |
|---|--------------|--------------|--------------|--------------|--------------|--------------|--------------|--------------|--------------|--------------|
| | Jul | Aug | Sep | Oct | Nov | Dec | Jan | Feb | Mar | Apr |
| | '000 | '000 | '000 | '000 | '000 | '000 | '000 | '000 | '000 | '000 |
| OCEANIA AND ANTARCTICA— | | | | | | | | | | |
| Fiji | 18.9 | 21.4 | 19.0 | 19.5 | 19.9 | 20.0 | 13.1 | 16.3 | 14.4 | 20.1 |
| New Caledonia | 1.5 | 1.6 | 1.4 | 1.7 | 1.5 | 1.7 | 1.8 | 1.6 | 1.8 | 1.5 |
| New Zealand | 77.0 | 77.5 | 74.6 | 74.1 | 79.2 | 82.0 | 79.0 | 81.6 | 78.2 | 81.6 |
| Norfolk Island | 1.4 | 2.1 | 2.1 | 2.1 | 1.9 | 1.6 | 2.0 | 1.9 | 2.4 | 1.9 |
| Papua New Guinea | 5.6 | 5.2 | 5.0 | 5.1 | 5.0 | 5.1 | 5.7 | 5.7 | 5.7 | 5.5 |
| Vanuatu | 5.2 | 4.8 | 4.7 | 4.9 | 4.1 | 5.0 | 5.6 | 6.2 | 5.1 | 5.5 |
| <i>Total(d)</i> | 115.3 | 117.7 | 112.2 | 112.7 | 116.7 | 120.5 | 112.8 | 119.4 | 113.1 | 120.8 |
| NORTH-WEST EUROPE— | | | | | | | | | | |
| France | 7.5 | 8.2 | 8.1 | 8.8 | 7.3 | 6.9 | 6.8 | 5.5 | 6.2 | 6.5 |
| Germany | 6.0 | 5.2 | 6.2 | 6.5 | 5.4 | 5.1 | 4.0 | 5.8 | 4.9 | 5.3 |
| Ireland | 2.6 | 2.7 | 2.6 | 2.9 | 2.8 | 2.7 | 3.3 | 1.9 | 2.6 | 2.5 |
| Netherlands | 1.8 | 1.7 | 1.9 | 2.0 | 1.9 | 1.7 | 1.7 | 1.9 | 1.7 | 2.1 |
| Switzerland | 1.8 | 1.7 | 1.6 | 1.5 | 1.9 | 1.9 | 1.6 | 1.4 | 1.0 | 2.2 |
| UK, CIs & IOM | 34.4 | 35.9 | 34.9 | 33.5 | 32.9 | 35.0 | 33.6 | 34.0 | 34.3 | 35.4 |
| <i>Total(d)</i> | 58.4 | 59.0 | 59.1 | 59.0 | 56.2 | 57.2 | 54.6 | 54.5 | 54.5 | 58.1 |
| SOUTHERN AND EASTERN EUROPE— | | | | | | | | | | |
| Greece | 3.9 | 3.9 | 3.8 | 3.7 | 4.0 | 3.4 | 2.6 | 3.0 | 3.5 | 4.7 |
| Italy | 10.6 | 10.0 | 10.7 | 10.2 | 10.2 | 9.5 | 8.2 | 8.0 | 8.9 | 8.5 |
| Spain | 2.1 | 2.4 | 2.1 | 2.1 | 1.9 | 2.0 | 2.3 | 2.4 | 2.1 | 1.9 |
| <i>Total(d)</i> | 25.4 | 25.2 | 25.5 | 24.8 | 24.3 | 25.1 | 20.0 | 20.4 | 23.1 | 23.4 |
| NORTH AFRICA AND THE MIDDLE EAST— | | | | | | | | | | |
| Lebanon | 2.2 | 2.2 | 2.0 | 2.2 | 2.0 | 2.1 | 1.3 | 2.6 | 3.5 | 2.4 |
| Turkey | 1.7 | 1.9 | 2.6 | 3.5 | 2.0 | 1.8 | 1.4 | 1.5 | 1.7 | 1.7 |
| <i>Total(d)</i> | 14.7 | 14.6 | 15.2 | 17.4 | 16.1 | 13.1 | 13.1 | 14.3 | 15.8 | 14.6 |
| SOUTH-EAST ASIA— | | | | | | | | | | |
| Indonesia | 30.4 | 32.8 | 32.3 | 35.7 | 27.4 | 38.5 | 37.9 | 38.2 | 38.3 | 38.8 |
| Malaysia | 16.2 | 16.2 | 15.2 | 15.8 | 17.0 | 16.7 | 17.7 | 14.6 | 16.7 | 21.3 |
| Philippines | 8.1 | 9.6 | 8.5 | 8.0 | 8.5 | 8.9 | 8.6 | 9.4 | 9.3 | 9.1 |
| Singapore | 17.3 | 18.2 | 19.2 | 17.2 | 17.4 | 18.9 | 17.9 | 20.0 | 15.6 | 19.0 |
| Thailand | 32.1 | 33.5 | 33.2 | 32.0 | 30.9 | 31.2 | 29.2 | 32.5 | 30.2 | 31.3 |
| Viet Nam | 14.9 | 14.4 | 14.3 | 14.5 | 13.7 | 13.5 | 12.4 | 11.2 | 12.3 | 13.4 |
| <i>Total(d)</i> | 123.7 | 129.2 | 128.6 | 127.6 | 119.3 | 131.9 | 127.6 | 129.6 | 126.1 | 137.5 |
| NORTH-EAST ASIA— | | | | | | | | | | |
| China (excludes SARs and Taiwan Province) | 21.9 | 23.7 | 22.0 | 22.5 | 22.7 | 23.9 | 23.8 | 21.9 | 22.5 | 21.9 |
| Hong Kong (SAR of China) | 17.0 | 16.8 | 16.6 | 20.9 | 16.7 | 16.4 | 15.5 | 18.0 | 14.8 | 17.2 |
| Japan | 11.0 | 11.0 | 11.7 | 11.1 | 13.0 | 13.0 | 12.5 | 12.6 | 11.4 | 11.9 |
| Korea | 3.4 | 3.3 | 3.1 | 2.9 | 3.3 | 3.2 | 2.7 | 2.9 | 3.0 | 3.4 |
| Taiwan | 3.2 | 2.9 | 3.3 | 3.0 | 3.1 | 3.2 | 3.3 | 3.2 | 3.3 | 3.6 |
| <i>Total(d)</i> | 57.4 | 58.2 | 57.2 | 61.5 | 59.3 | 60.6 | 58.5 | 59.0 | 56.1 | 58.5 |
| SOUTHERN AND CENTRAL ASIA— | | | | | | | | | | |
| India | 11.3 | 12.9 | 11.1 | 11.5 | 11.0 | 11.1 | 11.0 | 10.6 | 10.7 | 13.3 |
| Sri Lanka | 1.9 | 2.0 | 1.8 | 2.4 | 2.1 | 2.2 | 2.3 | 2.0 | 2.2 | 2.2 |
| <i>Total(d)</i> | 16.8 | 18.4 | 17.3 | 17.4 | 17.1 | 16.8 | 17.2 | 16.8 | 16.7 | 20.1 |
| AMERICAS— | | | | | | | | | | |
| Canada | 8.1 | 8.8 | 7.7 | 7.9 | 7.9 | 8.4 | 7.9 | 7.8 | 6.4 | 8.0 |
| United States of America | 41.9 | 43.1 | 43.1 | 40.6 | 38.7 | 38.7 | 35.1 | 37.0 | 37.0 | 48.2 |
| <i>Total(d)</i> | 55.6 | 58.7 | 56.8 | 54.4 | 52.3 | 52.5 | 47.9 | 52.9 | 50.6 | 63.3 |
| SUB-SAHARAN AFRICA— | | | | | | | | | | |
| South Africa | 5.1 | 5.4 | 5.1 | 5.1 | 4.8 | 4.9 | 4.9 | 5.3 | 5.0 | 5.7 |
| <i>Total(d)</i> | 9.1 | 9.0 | 9.4 | 8.7 | 8.4 | 9.6 | 8.1 | 8.8 | 8.1 | 9.5 |
| Total(d)(e) | 479.3 | 493.0 | 484.4 | 486.3 | 472.4 | 489.4 | 461.7 | 477.0 | 466.3 | 508.4 |

(a) Figures for short-term movement are based on a sample and are subject to sampling error. See paragraphs 10 and 11 of Explanatory Notes for more detail.

(b) For information on country classification see paragraphs 7 to 9 of Explanatory Notes.

(c) For information on seasonally adjusted estimates see paragraphs 18 to 22 of Explanatory Notes.

(d) Includes other countries in the region.

(e) Includes not stated/inadequately described.

SHORT-TERM MOVEMENT(a), RESIDENT DEPARTURES—Main Destinations(b): Original

| | CALENDAR YEAR | | FINANCIAL YEAR | | 2008 | | 2009 | | | |
|---|----------------|----------------|----------------|----------------|--------------|--------------|--------------|--------------|--------------|--------------|
| | 2007 | 2008 | 2006-07 | 2007-08 | Nov | Dec | Jan | Feb | Mar | Apr |
| <i>Main destination</i> | '000 | '000 | '000 | '000 | '000 | '000 | '000 | '000 | '000 | '000 |
| OCEANIA AND ANTARCTICA— | | | | | | | | | | |
| Fiji | 200.4 | 236.3 | 193.6 | 223.9 | 18.3 | 23.8 | 12.3 | 10.4 | 13.5 | 18.8 |
| New Caledonia | 15.3 | 19.2 | 14.9 | 17.1 | 1.3 | 1.9 | 1.7 | 0.8 | 1.6 | 1.6 |
| New Zealand | 902.0 | 921.1 | 883.3 | 913.4 | 73.0 | 125.8 | 79.0 | 84.8 | 85.2 | 86.1 |
| Norfolk Island | 25.1 | 25.9 | 24.5 | 27.6 | 2.0 | 1.7 | 1.7 | 1.7 | 2.7 | 1.8 |
| Papua New Guinea | 53.1 | 59.6 | 47.3 | 57.4 | 5.0 | 4.9 | 4.7 | 4.5 | 5.3 | 5.8 |
| Vanuatu | 46.8 | 52.8 | 44.4 | 46.9 | 4.3 | 5.8 | 6.0 | 4.0 | 4.8 | 4.9 |
| <i>Total(c)</i> | 1 303.1 | 1 377.4 | 1 267.4 | 1 347.2 | 108.6 | 173.1 | 110.6 | 110.6 | 117.4 | 123.0 |
| NORTH-WEST EUROPE— | | | | | | | | | | |
| France | 94.1 | 94.4 | 76.4 | 99.8 | 3.9 | 7.4 | 3.5 | 1.9 | 4.1 | 7.1 |
| Germany | 60.9 | 67.2 | 58.9 | 64.7 | 4.2 | 5.8 | 2.2 | 3.1 | 3.8 | 4.3 |
| Ireland | 34.1 | 35.5 | 32.1 | 37.8 | 1.3 | 3.4 | 1.3 | 0.8 | 1.8 | 2.0 |
| Netherlands | 21.6 | 21.9 | 20.6 | 22.4 | 1.3 | 1.5 | 0.8 | 0.8 | 1.2 | 2.5 |
| UK, Cls & IOM | 428.4 | 420.5 | 415.2 | 429.5 | 19.7 | 41.3 | 18.1 | 15.7 | 25.8 | 33.2 |
| <i>Total(c)</i> | 708.3 | 707.7 | 669.7 | 723.6 | 34.1 | 67.4 | 29.7 | 25.2 | 40.0 | 53.4 |
| SOUTHERN AND EASTERN EUROPE— | | | | | | | | | | |
| Greece | 49.4 | 47.0 | 45.3 | 48.7 | 0.9 | 1.3 | 0.4 | 0.6 | 1.5 | 3.2 |
| Italy | 114.5 | 124.2 | 107.6 | 120.3 | 4.5 | 7.4 | 2.5 | 2.0 | 5.0 | 8.9 |
| Spain | 27.6 | 27.1 | 26.5 | 28.5 | 1.0 | 1.4 | 1.0 | 1.1 | 1.6 | 2.0 |
| <i>Total(c)</i> | 303.6 | 306.7 | 285.9 | 307.9 | 10.2 | 17.7 | 6.0 | 5.6 | 12.3 | 20.0 |
| NORTH AFRICA AND THE MIDDLE EAST— | | | | | | | | | | |
| Lebanon | 18.8 | 24.3 | 15.5 | 21.3 | 1.8 | 2.5 | 0.5 | 1.2 | 2.7 | 2.1 |
| Turkey | 23.0 | 24.6 | 22.9 | 23.4 | 1.0 | 0.9 | 0.3 | 0.4 | 1.1 | 2.2 |
| <i>Total(c)</i> | 150.2 | 176.5 | 135.4 | 164.2 | 17.9 | 17.5 | 11.6 | 9.0 | 14.6 | 14.7 |
| SOUTH-EAST ASIA— | | | | | | | | | | |
| Indonesia | 282.5 | 380.6 | 231.4 | 328.1 | 24.0 | 40.2 | 35.1 | 25.3 | 32.9 | 36.6 |
| Malaysia | 181.2 | 191.0 | 172.5 | 185.6 | 15.6 | 23.1 | 19.6 | 11.9 | 15.5 | 20.4 |
| Philippines | 89.6 | 100.4 | 87.0 | 95.3 | 8.2 | 17.6 | 8.7 | 8.6 | 10.3 | 9.7 |
| Singapore | 221.5 | 217.7 | 208.3 | 224.4 | 16.7 | 23.8 | 16.2 | 16.3 | 15.3 | 19.4 |
| Thailand | 374.5 | 404.1 | 331.7 | 403.0 | 30.2 | 35.2 | 26.4 | 25.8 | 26.1 | 34.6 |
| Viet Nam | 155.9 | 166.3 | 143.3 | 159.2 | 13.9 | 23.9 | 16.6 | 9.0 | 12.7 | 12.2 |
| <i>Total(c)</i> | 1 351.8 | 1 514.4 | 1 217.7 | 1 446.0 | 113.7 | 171.1 | 127.4 | 100.4 | 116.3 | 137.4 |
| NORTH-EAST ASIA— | | | | | | | | | | |
| China (excludes SARs and Taiwan Province) | 284.5 | 277.2 | 268.5 | 286.7 | 21.4 | 26.8 | 21.0 | 14.6 | 24.2 | 26.2 |
| Hong Kong (SAR of China) | 206.5 | 212.9 | 200.0 | 215.1 | 19.9 | 22.6 | 14.1 | 15.3 | 16.6 | 18.7 |
| Japan | 130.4 | 144.7 | 114.8 | 142.3 | 10.9 | 17.5 | 17.7 | 13.7 | 12.3 | 11.4 |
| Korea | 33.1 | 37.7 | 30.8 | 35.9 | 3.5 | 4.4 | 2.2 | 2.1 | 2.9 | 4.0 |
| Taiwan | 38.1 | 38.1 | 38.5 | 38.6 | 3.8 | 5.0 | 3.4 | 2.8 | 3.5 | 3.3 |
| <i>Total(c)</i> | 698.7 | 718.6 | 656.6 | 726.2 | 60.0 | 77.2 | 59.2 | 49.0 | 60.4 | 64.1 |
| SOUTHERN AND CENTRAL ASIA— | | | | | | | | | | |
| India | 121.8 | 136.0 | 113.6 | 128.9 | 20.3 | 21.2 | 10.0 | 13.1 | 9.2 | 10.4 |
| Sri Lanka | 22.3 | 23.3 | 21.0 | 21.6 | 2.9 | 5.5 | 1.4 | 1.6 | 1.8 | 2.4 |
| <i>Total(c)</i> | 182.0 | 202.0 | 168.6 | 191.0 | 30.2 | 31.7 | 14.0 | 18.8 | 15.0 | 16.9 |
| AMERICAS— | | | | | | | | | | |
| Canada | 93.7 | 101.3 | 91.9 | 99.8 | 4.0 | 12.5 | 8.0 | 5.0 | 3.4 | 6.4 |
| United States of America | 479.0 | 492.3 | 450.7 | 491.9 | 35.9 | 49.6 | 30.8 | 25.2 | 33.8 | 49.1 |
| <i>Total(c)</i> | 636.6 | 662.4 | 603.3 | 658.3 | 48.5 | 70.3 | 43.3 | 37.1 | 45.2 | 62.0 |
| SUB-SAHARAN AFRICA— | | | | | | | | | | |
| South Africa | 58.9 | 61.6 | 58.7 | 61.3 | 5.1 | 8.0 | 4.2 | 4.7 | 5.2 | 5.9 |
| <i>Total(c)</i> | 103.4 | 108.2 | 97.8 | 106.5 | 8.8 | 15.1 | 7.2 | 7.2 | 7.5 | 9.6 |
| Total(c)(d) | 5 462.3 | 5 808.1 | 5 127.1 | 5 699.5 | 433.5 | 642.6 | 409.6 | 363.1 | 430.1 | 503.9 |

(a) Figures for short-term movement are based on a sample and are subject to sampling error. See paragraphs 10 and 11 of Explanatory Notes for more detail.

(b) For information on country classification see paragraphs 7 to 9 of Explanatory Notes.

(c) Includes other countries in the region.

(d) Includes not stated/inadequately described.

SHORT-TERM MOVEMENT(a), RESIDENT DEPARTURES—Intended Length of Stay and Main Reason for Journey: Original

| | CALENDAR YEAR | | FINANCIAL YEAR | | 2008 | | 2009 | | | |
|--------------------------------|----------------|----------------|----------------|----------------|--------------|--------------|--------------|--------------|--------------|--------------|
| | 2007 | 2008 | 2006-07 | 2007-08 | Nov | Dec | Jan | Feb | Mar | Apr |
| | '000 | '000 | '000 | '000 | '000 | '000 | '000 | '000 | '000 | '000 |
| Intended length of stay | | | | | | | | | | |
| Under 1 week | 708.3 | 740.4 | 668.4 | 743.5 | 66.2 | 46.1 | 41.4 | 60.9 | 72.5 | 65.5 |
| 1 and under 2 weeks | 1 603.9 | 1 721.5 | 1 481.6 | 1 690.7 | 130.9 | 144.1 | 129.2 | 118.2 | 137.8 | 166.3 |
| 2 weeks and under 1 month | 1 577.6 | 1 713.9 | 1 482.5 | 1 652.9 | 106.3 | 222.8 | 136.8 | 107.6 | 116.4 | 158.4 |
| 1 and under 2 months | 896.1 | 935.1 | 837.4 | 920.4 | 57.9 | 166.3 | 50.7 | 38.7 | 55.5 | 60.8 |
| 2 and under 3 months | 260.1 | 278.5 | 248.4 | 273.2 | 35.7 | 34.5 | 15.4 | 11.9 | 15.3 | 18.3 |
| 3 and under 6 months | 233.1 | 239.0 | 228.8 | 235.7 | 24.6 | 17.1 | 14.0 | 12.4 | 18.0 | 17.6 |
| 6 and under 12 months | 183.2 | 179.6 | 180.0 | 183.1 | 12.0 | 11.8 | 22.0 | 13.4 | 14.5 | 16.9 |
| Total(b) | 5 462.3 | 5 808.1 | 5 127.1 | 5 699.5 | 433.5 | 642.6 | 409.6 | 363.1 | 430.1 | 503.9 |
| Main reason for journey | | | | | | | | | | |
| Convention/conference | 200.6 | 209.4 | 194.9 | 209.3 | 19.3 | 5.8 | 8.4 | 11.9 | 16.2 | 12.1 |
| Business | 772.2 | 745.0 | 752.9 | 773.5 | 66.1 | 34.8 | 44.4 | 58.0 | 64.3 | 53.4 |
| Visiting friends/relatives | 1 301.4 | 1 366.1 | 1 261.2 | 1 343.7 | 106.4 | 212.1 | 102.1 | 91.9 | 112.0 | 131.1 |
| Holiday | 2 716.1 | 2 995.1 | 2 469.5 | 2 891.2 | 201.8 | 345.7 | 211.3 | 171.1 | 204.6 | 268.2 |
| Employment | 120.2 | 124.7 | 120.4 | 122.1 | 9.7 | 8.3 | 14.3 | 9.1 | 10.7 | 11.0 |
| Education | 57.9 | 63.9 | 56.5 | 60.2 | 5.7 | 5.3 | 5.9 | 2.9 | 2.4 | 5.3 |
| Other & not stated(c) | 294.1 | 303.9 | 271.7 | 299.5 | 24.6 | 30.7 | 23.2 | 18.4 | 19.8 | 22.8 |
| Total | 5 462.3 | 5 808.1 | 5 127.1 | 5 699.5 | 433.5 | 642.6 | 409.6 | 363.1 | 430.1 | 503.9 |

(a) Figures for short-term movement are based on a sample and are subject to sampling error. See paragraphs 10 and 11 of Explanatory Notes for more detail.

(b) Includes not stated.
(c) Includes 'Exhibition' from July 1998.

SHORT-TERM MOVEMENT(a), VISITOR DEPARTURES—State Where Spent Most Time: Original

| State where spent most time | CALENDAR YEAR | | FINANCIAL YEAR | | 2008 | | 2009 | | | |
|------------------------------|----------------|----------------|----------------|----------------|--------------|--------------|--------------|--------------|--------------|--------------|
| | 2007 | 2008 | 2006-07 | 2007-08 | Nov | Dec | Jan | Feb | Mar | Apr |
| | '000 | '000 | '000 | '000 | '000 | '000 | '000 | '000 | '000 | '000 |
| New South Wales | 2 201.4 | 2 195.0 | 2 183.4 | 2 194.1 | 186.6 | 188.1 | 243.4 | 192.5 | 196.1 | 190.3 |
| Victoria | 977.5 | 990.0 | 962.8 | 986.7 | 96.1 | 99.0 | 107.8 | 86.0 | 95.9 | 91.9 |
| Queensland | 1 614.5 | 1 538.7 | 1 624.6 | 1 587.7 | 136.3 | 122.3 | 143.5 | 108.1 | 121.6 | 123.5 |
| South Australia | 171.1 | 175.2 | 170.5 | 170.0 | 16.3 | 18.5 | 19.3 | 13.2 | 14.9 | 16.9 |
| Western Australia | 541.7 | 550.2 | 523.8 | 551.3 | 49.8 | 57.7 | 64.7 | 45.5 | 54.5 | 54.8 |
| Tasmania | 46.3 | 45.2 | 47.5 | 45.7 | 4.2 | 4.7 | 7.3 | 6.3 | 5.7 | 4.4 |
| Northern Territory | 104.6 | 64.8 | 95.4 | 88.0 | 4.7 | 4.1 | 3.4 | 3.0 | 4.5 | 5.4 |
| Australian Capital Territory | 44.8 | 50.6 | 45.0 | 45.5 | 5.7 | 6.3 | 4.6 | 4.1 | 4.1 | 4.7 |
| Other Territories | 1.1 | 0.7 | 1.0 | 1.1 | — | — | 0.1 | 0.1 | — | — |
| Total | 5 702.9 | 5 610.4 | 5 654.0 | 5 670.0 | 499.7 | 500.7 | 594.0 | 458.8 | 497.3 | 492.0 |

— nil or rounded to zero (including null cells)

(a) Figures for short-term movement are based on a sample and are subject to sampling error. See paragraphs 10 and 11 of Explanatory Notes for more detail.

| Country of birth | CALENDAR YEAR | | FINANCIAL YEAR | | 2008 | | 2009 | | | |
|---|----------------|----------------|----------------|----------------|---------------|---------------|---------------|---------------|---------------|---------------|
| | 2007 | 2008 | 2006-07 | 2007-08 | Nov | Dec | Jan | Feb | Mar | Apr |
| | no. | no. | no. | no. | no. | no. | no. | no. | no. | no. |
| Major group— | | | | | | | | | | |
| Oceania and Antarctica | 29 210 | 33 700 | 27 060 | 31 700 | 2 490 | 2 880 | 3 990 | 2 580 | 2 370 | 2 030 |
| North-West Europe | 27 450 | 26 820 | 26 900 | 27 170 | 2 620 | 2 030 | 2 220 | 2 290 | 1 970 | 1 980 |
| Southern and Eastern Europe | 3 490 | 3 920 | 3 480 | 3 570 | 410 | 330 | 260 | 330 | 300 | 240 |
| North Africa and the Middle East | 8 190 | 10 040 | 9 690 | 8 280 | 940 | 640 | 690 | 1 120 | 1 010 | 860 |
| South-East Asia | 19 630 | 22 030 | 19 470 | 21 160 | 1 860 | 1 770 | 1 460 | 1 720 | 2 000 | 1 690 |
| North-East Asia | 17 080 | 20 260 | 16 620 | 17 980 | 1 650 | 1 610 | 1 940 | 1 920 | 2 090 | 1 620 |
| Southern and Central Asia | 21 450 | 27 620 | 21 370 | 23 970 | 2 430 | 2 230 | 2 010 | 2 510 | 2 460 | 2 260 |
| Americas | 3 990 | 4 400 | 4 090 | 4 240 | 380 | 330 | 370 | 330 | 340 | 280 |
| Sub-Saharan Africa | 10 530 | 11 990 | 10 920 | 10 600 | 1 160 | 1 300 | 1 230 | 1 110 | 1 070 | 1 050 |
| Total(b) | 141 650 | 161 520 | 140 150 | 149 370 | 14 010 | 13 200 | 14 210 | 13 960 | 13 660 | 12 050 |
| Selected source countries— | | | | | | | | | | |
| China (excludes SARs and Taiwan Province) | 12 620 | 14 820 | 12 010 | 12 960 | 1 250 | 1 180 | 1 370 | 1 410 | 1 690 | 1 190 |
| Fiji | 1 560 | 1 870 | 1 490 | 1 790 | 130 | 200 | 200 | 170 | 160 | 130 |
| Hong Kong (SAR of China) | 860 | 950 | 1 000 | 870 | 70 | 70 | 100 | 80 | 70 | 80 |
| India | 13 710 | 17 630 | 13 500 | 15 340 | 1 540 | 1 310 | 1 250 | 1 470 | 1 520 | 1 430 |
| Indonesia | 1 630 | 1 870 | 1 700 | 1 790 | 140 | 150 | 140 | 110 | 160 | 100 |
| Iraq | 1 940 | 3 410 | 2 210 | 2 320 | 260 | 190 | 230 | 480 | 400 | 290 |
| Lebanon | 1 250 | 1 460 | 1 390 | 1 430 | 120 | 80 | 70 | 110 | 100 | 60 |
| Malaysia | 3 030 | 3 840 | 2 900 | 3 520 | 500 | 360 | 230 | 210 | 300 | 180 |
| New Zealand | 25 740 | 29 320 | 23 910 | 27 600 | 2 170 | 2 430 | 3 490 | 2 160 | 1 980 | 1 710 |
| Philippines | 5 630 | 6 320 | 5 560 | 6 110 | 450 | 500 | 360 | 520 | 530 | 550 |
| Serbia, Montenegro and Kosovo | 510 | 530 | 570 | 520 | 40 | 50 | 20 | 30 | 50 | 40 |
| Singapore | 1 640 | 1 820 | 1 660 | 1 820 | 170 | 150 | 130 | 80 | 110 | 100 |
| South Africa | 4 190 | 6 550 | 4 000 | 5 170 | 670 | 800 | 830 | 580 | 640 | 620 |
| Sri Lanka | 2 870 | 4 290 | 2 720 | 3 620 | 330 | 390 | 360 | 320 | 310 | 370 |
| Sudan | 1 560 | 910 | 2 510 | 1 020 | 70 | 40 | 40 | 40 | 40 | 60 |
| Taiwan | 670 | 700 | 670 | 750 | 50 | 50 | 100 | 90 | 60 | 60 |
| UK, CIs & IOM | 23 650 | 22 670 | 23 220 | 23 240 | 2 260 | 1 690 | 1 810 | 1 910 | 1 670 | 1 680 |
| United States of America | 1 430 | 1 450 | 1 460 | 1 470 | 120 | 110 | 120 | 120 | 110 | 90 |
| Viet Nam | 2 930 | 2 780 | 3 140 | 2 690 | 250 | 240 | 170 | 190 | 240 | 210 |
| Zimbabwe | 970 | 1 040 | 940 | 1 020 | 100 | 140 | 80 | 90 | 80 | 110 |

(a) For information on country classification see paragraphs 7 and 8 of Explanatory Notes.

(b) Includes not stated/inadequately described.

EXPLANATORY NOTES

INTRODUCTION

1 This publication contains statistics of persons arriving in, and departing from, Australia, together with the major characteristics of travellers. More detailed statistics can be made available on request (see paragraph 36).

SOURCE OF THE STATISTICS

2 Persons arriving in, or departing from, Australia provide information in the form of incoming and outgoing passenger cards. Incoming persons also provide information in visa applications (apart from people travelling as Australian or New Zealand (NZ) citizens). These and other information available to the Department of Immigration and Citizenship (DIAC) serve as a source for statistics of overseas arrivals and departures (OAD).

3 In July 1998, DIAC revised the incoming and outgoing passenger cards and associated procedures as well as computer systems. Following these changes, some questions on the passenger cards were not compulsory and answers to these questions were not checked by Customs officers. The question on marital status was deleted. Data on marital status is now derived from visa applications (only for certain visa classes) and is therefore not available for Australian or NZ citizens. The changes also affect the data for 'previous country of residence' which is imputed for Australian and NZ citizens. For more information see the May 1998 issue of this publication. Since July 1998, there have been additional minor changes to both incoming and outgoing passenger cards.

4 From July 2001, DIAC adopted a new passenger card processing system which involved electronic imaging of passenger cards and intelligent character recognition of the data stored in the images. This process has yielded several improvements to the processing of passenger card data, most notably the detailed information about missing values. There have also been several changes to data quality. Information on these changes appears in the *Data Quality Issues* section of this publication.

SCOPE

5 Overseas arrivals and departures statistics relate to the number of movements of travellers rather than the number of travellers (i.e. multiple movements of individual persons during a given reference period are each counted separately). The statistics exclude the movements of operational air and ships' crew, transit passengers who pass through Australia but are not cleared for entry, passengers on pleasure cruises commencing and finishing in Australia, and unauthorised arrivals.

STATE AND TERRITORY CLASSIFICATION

6 Following the 1992 amendment to the *Acts Interpretation Act* to include the Indian Ocean Territories of Christmas Island and the Cocos (Keeling) Islands as part of geographic Australia, population estimates commencing with September quarter 1993 include estimates for these two territories. To reflect this change, another category of the state and territory classification has been created, known as Other Territories. Other Territories includes Jervis Bay Territory, Christmas Island and the Cocos (Keeling) Islands. OAD data for Other Territories are not available prior to February 1995.

COUNTRY CLASSIFICATION

7 The classification of countries in this publication is the Standard Australian Classification of Countries. For more detailed information refer to the ABS publication *Standard Australian Classification of Countries (SACC), Second Edition* (cat. no. 1269.0).

8 The statistics on country of birth, citizenship, residence or main destination have certain limitations because of reporting on passenger cards. For dissemination purposes the United Kingdom (England, Scotland, Wales, Northern Ireland), Channel Islands and Isle of Man are combined; Korea includes both the Republic of Korea and the Democratic People's Republic of Korea; and Serbia, Montenegro and Kosovo are combined.

EXPLANATORY NOTES *continued*

COUNTRY CLASSIFICATION

continued

9 A large number of short-term residents departing, state Europe as their main destination on the passenger card. These responses are grouped into inadequately described, unless otherwise indicated.

ESTIMATION METHOD

10 OAD statistics are derived from a combination of full enumeration and sampling. All permanent movements and all movements with a duration of stay of one year or more are fully enumerated. The number of movements where the duration of stay is less than one year are fully enumerated, however their characteristics are sampled. Statistics relating to these movements are therefore estimates which may differ from statistics which would have been obtained if details of all these movements had been processed. Sample standard errors can be found in the *Standard Errors* section of this publication.

11 Since January 1997 variable sample skips were used in the selection of records to be sampled. Separate skips were applied for each country of citizenship. Over a year about 3.5% of all short-term movements were selected for sampling. However, for operational reasons variable skips across months were ceased from August 2000. From January 2005, 4.9% of all short-term movements have been selected for sample. The skip values correspond to the lowest skip value (i.e. the highest sample selected) for each country from a sample design including individual month and direction of travel as sub-categories.

CONFIDENTIALITY

12 The *Census and Statistics Act, 1905* provides the authority for the ABS to collect statistical information, and requires that statistical output shall not be published or disseminated in a manner that is likely to enable the identification of a particular person or organisation. This requirement means that the ABS must take care and make assurances that any statistical information about individual respondents cannot be derived from published data.

13 Some techniques used to guard against identification or disclosure of confidential information in statistical tables are suppression of sensitive cells, random adjustments to cells with very small values and rounding. In these cases data may not sum to totals due to the confidentialisation of individual cells.

14 The statistics in this publication have been rounded to the nearest 100 for short-term movements and to the nearest 10 for permanent and long-term movements. As a result, sums of the components may not add exactly to totals. Analysis featured in the Key Points and Main Features of this publication is based on unrounded data. Calculations made on rounded data may differ to those published.

CORRECTIONS AND IMPUTATIONS

15 The imprecision due to sampling errors should not be confused with errors arising from imperfections in reporting, which may occur in any data collection, whether sampled or not. Every effort is made to minimise such errors, both through careful design of the passenger cards and through checks on the information once it is received. During the edit process some items are corrected where they conflict with other known information. Missing replies to certain items such as age, state and country of stay/residence are also imputed by reference to other related items. Information on non-response rates and data imputation appears in the *Data Quality Issues* section of this publication.

16 Errors of this kind differ from discrepancies arising from the fact that certain information reflects the travellers' intentions at the time the passenger cards were completed. These intentions are, of course, subject to change. Particularly affected is the distinction between permanent and temporary movement and in the latter case, length of intended stay, country in which most time will be spent and main reason for journey.

SEASONAL ADJUSTMENT AND TREND ESTIMATES

17 Seasonally adjusted and trend estimates of short-term overseas movements are shown in tables 1, 2, 3, 4, 7 and 8.

EXPLANATORY NOTES *continued*

SEASONAL ADJUSTMENT AND TREND ESTIMATES *continued*

18 Seasonally adjusted estimates are derived by estimating and removing systematic calendar related effects from the original series. In the short-term visitor arrival and short-term resident departure series, these calendar related effects are known as seasonal (e.g. increased travel in December due to the Christmas holiday period) and trading day influences (arising from the varying length of each month and the varying number of Sundays, Mondays, Tuesdays, etc. in each month). Each influence is estimated by separate seasonal and trading day factors which, when combined, are referred to as the combined adjustment factors.

19 From November 2004 ABS has introduced an improved method for removing trading day effects from seasonally adjusted estimates. Corrections for trading day effects are now applied as prior corrections to the original estimates, rather than being applied within the seasonal adjustment process. This is now consistent with the treatment of any corrections for large extremes, changes in level, changes in seasonal pattern, Easter, and other effects. This change in methodology will result in revisions to seasonally adjusted and trend estimates. From July 2003 concurrent seasonal adjustment methodology has been used to derive the combined adjustment factors. This means that data from the current month are used in estimating seasonal and trading day factors for the current and previous months. Concurrent seasonal adjustment replaces the forward factor methodology used since seasonal adjustment of short-term visitor arrivals began in 1969 and short-term resident departures in 1976.

20 Concurrent adjustment can result in revisions each month to the seasonally adjusted estimates for earlier periods. However, in most instances, the only noticeable revisions will be to the combined adjustment factors for the current month, the previous month and the same month a year ago. Although there is no specific information paper on concurrent adjustment to short-term visitor arrivals or resident departures, more detail on the method in general can be found in the *Information Paper: Introduction of Concurrent Seasonal Adjustment into the Retail Trade Series* (cat. no. 8514.0).

21 More recently, the ABS implemented improved methods of producing seasonally adjusted estimates, focused on the application of Autoregressive Integrated Moving Average (ARIMA) modelling techniques. The revision properties of the seasonally adjusted and trend estimates can be improved by the use of ARIMA modelling. ARIMA modelling relies on the characteristics of the series being analysed to project future period data. The projected values are temporary, intermediate values, that are only used internally to improve the estimation of the seasonal factors. The projected data do not affect the original estimates and are discarded at the end of the seasonal adjustment process. The OAD collection uses ARIMA modelling where appropriate for individual time series. The ARIMA model is assessed as part of the annual reanalysis and following the 2007–08 annual reanalysis 96% of time series use an ARIMA model. For more information on the details of ARIMA modelling see 'Feature article: Use of ARIMA modelling to reduce revisions' in the October 2004 issue of *Australian Economic Indicators* (cat. no. 1350.0).

22 Seasonal adjustment procedures do not aim to remove the irregular or non-seasonal influences which may be present in any particular month, such as the effect of major sporting and cultural events, changes in airfares and the fluctuation of the Australian dollar relative to other currencies. Irregular influences that are highly volatile can make it difficult to interpret the movement of the series even after adjustment for seasonal variation. Trend estimates take these irregular influences into account.

23 The trend estimates of short-term overseas visitor arrivals and short-term Australian resident departures are derived by applying a 13-term Henderson-weighted moving average to all months of the respective seasonally adjusted series except the first and last six months. Trend series are created for the last six months by applying surrogates of the Henderson weighted moving average to the seasonally adjusted series.

EXPLANATORY NOTES *continued*

SEASONAL ADJUSTMENT AND TREND ESTIMATES *continued*

24 While this technique enables smoothed data for the latest period to be produced, it does result in revisions to the smoothed series, principally of recent months, as additional observations become available. There may also be revisions as a result of the re-estimation of the seasonal factors. For further information, see *A Guide to Interpreting Time Series—Monitoring Trends* (cat. no. 1349.0).

25 Occasionally situations occur that necessitate breaks being applied to the trend series. These breaks are necessary because of a change in the underlying level of the original series. While the breaks apply to an individual country (e.g. Indonesia) a consequence is that breaks are also applied to the regional total series (e.g. Total South-East Asia) and the total series. Breaks currently included in the trend series are as follows:

- *October 2002: Short-term resident departures – Indonesia, Total South-East Asia and Total*—Trend series breaks due to the decrease in movements resulting from the Bali bombing of 12 October 2002.
- *December 2003: Short-term resident departures – Indonesia, Total South-East Asia and Total*—Trend series breaks due to a return to the trend levels experienced prior to the Bali bombing of 12 October 2002.
- *October 2005: Short-term resident departures – Indonesia, Total South-East Asia and Total*—Trend series breaks due to the decrease in movements resulting from the Bali bombing of 1 October 2005.
- *December 2006: Short-term resident departures – Indonesia, Total South-East Asia and Total*—Trend series breaks due to the increase in movements to Indonesia to levels closer to, but still lower than, the movements experienced prior to the Bali bombing of 1 October 2005.

26 An improved correction method has been implemented in the seasonal adjustment process, to remove the effects of Chinese New Year and Ramadan from the seasonally adjusted estimates.

- *Chinese New Year* — Chinese New Year often falls in February but on some occasions falls in January. The movement of Chinese New Year between the boundary of January and February can cause biased seasonally adjusted and trend estimates. The Chinese New Year proximity adjustment method takes into account the graduated increase in activity in the days leading up to the holiday period followed by a graduated return to the normal activity levels in the days following. In some series the proximity correction is only applied to part of the series, as it is not significant for the entire series. Further details on this adjustment method can be found in 'Estimating and removing the effects of Chinese New Year and Ramadan to improve the seasonal adjustment process' (ABS, *Australian Economic Indicators*, cat. no. 1350.0, November 2005 issue).
- *Ramadan* — Ramadan is the ninth month of the Islamic calendar and starts eleven days earlier each year in the Western calendar, so adjustments for this effect apply to different months over the years. The adjustment was made after the detection of a significant influence on travel for Malaysia and Indonesia associated with the end of the Islamic month of Ramadan. The estimates for Total South-East Asia were also corrected as a consequence of the Malaysia and Indonesia series corrections. Other time series did not have a significant Ramadan effect and were not corrected.

EFFECT OF NEW SEASONALLY ADJUSTED ESTIMATES ON TREND ESTIMATES

27 Under concurrent seasonal adjustment, the most recent seasonally adjusted and trend estimates are likely to be revised when original estimates for subsequent months become available. The trend revision is a combined result of the revision of the seasonally adjusted estimates and the revision derived from the use of asymmetric moving averages as future data become available. ABS research shows that about 75% of the total revision to the trend estimate at the current end of the time series is due to the use of different asymmetric moving averages when the original estimate for the next time

EXPLANATORY NOTES *continued*

EFFECT OF NEW SEASONALLY ADJUSTED ESTIMATES ON TREND ESTIMATES *continued*

period becomes available. To assess the reliability of the trend estimate at the current end, the 'what-if' charts present trend estimates under two different scenarios for the next time period. The charts show only the impact due to the changes of the asymmetric moving averages and do not include the unknown impact of revision to seasonal factor estimates that would arise when the original estimate for the next time period becomes available.

28 For a detailed discussion and analysis of OAD time series estimates, see the ABS *Demography Working Paper 2004/2 – Interpretation and Use of Overseas Arrivals and Departures Estimates* (cat. no. 3106.0.55.002), available on the ABS website.

29 For further information on the seasonal adjustment process contact the Assistant Director, Time Series Analysis on Canberra (02) 6252 6345 or by email at <time.series.analysis@abs.gov.au>.

RELATED PRODUCTS

30 Recent publications released by the National Migration Statistics Unit (ABS) include:

- *Guide to Migrant Statistical Sources* (cat. no. 3414.0)
- *Migrant Data Matrices* (cat. no. 3415.0)
- *Migrant Statistics News* (cat. no. 3413.0)

31 Users of these statistics may also wish to refer to the following ABS products:

- *Australian Demographic Statistics* (cat. no. 3101.0) – issued quarterly
- *Australian Historical Population Statistics* (cat. no. 3105.0.65.001)
- Demography Working papers, ABS website, <<http://www.abs.gov.au>>
- *Information Paper: Demographic Estimates and Projections: Concepts, Sources and Methods* (cat. no. 3228.0)
- *Migration, Australia* (cat. no. 3412.0) – issued annually
- *Overseas Arrivals and Departures, Australia, Time Series Spreadsheets*. These spreadsheets can be accessed on the ABS website from the Downloads tab.
- *Short-term Visitor Arrival Estimates, Australia* (cat. no. 3401.0.55.001) – issued monthly – final issue, May 2008
- *Tourism Statistics News* (cat. no. 8602.0)

32 Related statistics are also published by:

- DIAC, available on the department's website <<http://www.immi.gov.au>>:
 - *Immigration Update*
 - *Population Flows - Immigration Aspects*
 - *Settler Arrivals*
- Tourism Research Australia
- the Australian Government Department of Resources, Energy and Tourism

33 As well as the statistics included in this and related publications, additional demographic information is available on the ABS website, <<http://www.abs.gov.au>>; click Themes, then under People click on Demography. Users can also access the full range of electronic ABS data free of charge on the ABS website.

34 The ABS also issues a daily Release Advice on the website which details the products to be released in the week ahead.

ADDITIONAL STATISTICS AVAILABLE

35 The ABS may have other relevant data available on request. Generally, a charge is made for providing this information. Inquiries should be made to the National Information and Referral Service on 1300 135 070.

36 The following variables are available for overseas arrival and departure data:

- Age
- Airport/port of arrival/departure
- Arrival/departure date
- Australian residents:
 - Country spent/intend to spend most time abroad

EXPLANATORY NOTES *continued*

ADDITIONAL STATISTICS

AVAILABLE *continued*

- Intended/actual time away from Australia
- Main reason for journey (only available for long-term and short-term residents departing)
- State or territory of intended address/state or territory of residence
- Category of travel
- Citizenship (nationality)
- Country of birth
- Country of embarkation/disembarkation
- Intention to live in Australia for next 12 months (not available for short-term movements)
- Marital status (not available for Australian and New Zealand citizens)
- Occupation (not available for short-term movements)
- Overseas visitors:
 - Country of residence
 - Intended/actual length of stay
 - Main reason for journey (only available for long-term and short-term visitors arriving)
 - State or territory of intended address/in which most time was spent
- Permanent migrants:
 - Previous/future country of residence
 - State or territory of intended address/lived
- Sex

ACKNOWLEDGMENTS

37 This publication draws extensively on information provided by DIAC. The ABS also uses information provided freely by individuals, businesses, governments and other organisations. Their continued cooperation is very much appreciated; without it, the wide range of statistics published by the ABS would not be available. Information received by the ABS is treated in strict confidence as required by the *Census and Statistics Act 1905*.

APPENDIX 1 PASSENGER CARDS

INCOMING CARD - FRONT

| | |
|--|--|
| <p>Incoming passenger card • Australia</p> <p>PLEASE COMPLETE IN ENGLISH WITH A BLUE OR BLACK PEN</p> <p>▶ Family/surname <input type="text"/></p> <p>▶ Given names <input type="text"/></p> <p>▶ Passport number <input type="text"/></p> <p>◆ Flight number or name of ship <input type="text"/></p> <p>▶ Intended address in Australia <input type="text"/></p> <p style="margin-left: 20px;">State <input type="text"/></p> <p>▶ Do you intend to live in Australia for the next 12 months? Yes <input type="checkbox"/> No <input type="checkbox"/></p> <p>▶ If you are NOT an Australian citizen:</p> <p style="margin-left: 20px;">Do you have tuberculosis? Yes <input type="checkbox"/> No <input type="checkbox"/></p> <p style="margin-left: 20px;">Do you have any criminal conviction/s? Yes <input type="checkbox"/> No <input type="checkbox"/></p> | <p>YOU MUST ANSWER EVERY QUESTION – IF UNSURE, <input checked="" type="checkbox"/> Yes</p> <p>▶ Are you bringing into Australia:</p> <ol style="list-style-type: none"> 1. Goods that may be prohibited or subject to restrictions, such as medicines, steroids, firearms, weapons of any kind or illicit drugs? Yes <input type="checkbox"/> No <input type="checkbox"/> 2. More than 2250mL of alcohol or 250 cigarettes or 250g of tobacco products? Yes <input type="checkbox"/> No <input type="checkbox"/> 3. Goods obtained overseas or purchased duty and/or tax free in Australia with a combined total price of more than AUD\$900, including gifts? Yes <input type="checkbox"/> No <input type="checkbox"/> 4. Goods/samples for business/commercial use? Yes <input type="checkbox"/> No <input type="checkbox"/> 5. AUD\$10,000 or more in Australian or foreign currency equivalent? Yes <input type="checkbox"/> No <input type="checkbox"/> 6. Any food - includes dried, fresh, preserved, cooked, uncooked? Yes <input type="checkbox"/> No <input type="checkbox"/> 7. Wooden articles, plants, parts of plants, traditional medicines or herbs, seeds, bulbs, straw, nuts? Yes <input type="checkbox"/> No <input type="checkbox"/> 8. Animals, parts of animals, animal products including equipment, pet food, eggs, biologicals, specimens, birds, fish, insects, shells, bee products? Yes <input type="checkbox"/> No <input type="checkbox"/> 9. Soil, items with soil attached or used in freshwater areas ie. sports/recreational equipment, shoes? Yes <input type="checkbox"/> No <input type="checkbox"/> ▶ 10. Have you been in contact with farms, farm animals, wilderness areas or freshwater streams/lakes etc in the past 30 days? Yes <input type="checkbox"/> No <input type="checkbox"/> ▶ 11. Have you been in Africa or South America in the last 6 days? Yes <input type="checkbox"/> No <input type="checkbox"/> |
| <p>DECLARATION The information I have given is true, correct and complete. I understand failure to answer any questions may have serious consequences.</p> | <p>YOUR SIGNATURE</p> <p><input type="text"/></p> <p style="text-align: right;">Day <input type="text"/> Month <input type="text"/> Year <input type="text"/></p> |
| <p>TURN OVER THE CARD </p> <p style="text-align: right;">English</p> | |

INCOMING CARD - BACK

| | |
|--|--|
| <p>YOUR CONTACT DETAILS IN AUSTRALIA</p> <p>Phone <input type="text"/></p> <p>E-mail <input type="text"/></p> <p>Address <input type="text"/> OR <input type="text"/> State <input type="text"/></p> | <p>EMERGENCY CONTACT DETAILS (FAMILY OR FRIEND)</p> <p>Name <input type="text"/></p> <p>E-mail <input type="text"/></p> <p>Phone <input type="text"/> OR <input type="text"/></p> <p>Mail address <input type="text"/></p> |
| <p>PLEASE COMPLETE IN ENGLISH</p> <p>▶ In which country did you board this flight or ship? <input type="text"/></p> <p>◆ What is your usual occupation? <input type="text"/></p> <p>▶ Nationality as shown on passport <input type="text"/></p> <p>▶ Date of birth Day <input type="text"/> Month <input type="text"/> Year <input type="text"/></p> | <p>▶ PLEASE <input checked="" type="checkbox"/> AND ANSWER A OR B OR C</p> <div style="display: flex; justify-content: space-between;"> <div style="width: 30%; border: 1px solid black; padding: 5px;"> <p>A Migrating permanently to Australia <input type="checkbox"/></p> </div> <div style="width: 30%; border: 1px solid black; padding: 5px;"> <p>B Visitor or temporary entrant <input type="checkbox"/></p> <p>▶ Your intended length of stay in Australia Years <input type="text"/> Months <input type="text"/> OR Days <input type="text"/></p> <p>▶ Your country of residence <input type="text"/></p> <p>▶ Your main reason for coming to Australia (X one only)</p> <p style="margin-left: 20px;">Convention/conference 1 Employment <input type="checkbox"/> 4 Holiday <input type="checkbox"/> 7</p> <p style="margin-left: 20px;">Business 2 Education <input type="checkbox"/> 5 Other <input type="checkbox"/> 8</p> <p>Visiting friends or relatives 3 Exhibition <input type="checkbox"/> 6</p> </div> <div style="width: 30%; border: 1px solid black; padding: 5px;"> <p>C Resident returning to Australia <input type="checkbox"/></p> <p>▶ Country where you spent most time abroad <input type="text"/></p> </div> </div> <p style="text-align: center; font-weight: bold; font-size: small;">MAKE SURE YOU HAVE COMPLETED BOTH SIDES OF THIS CARD. PRESENT THIS CARD ON ARRIVAL WITH YOUR PASSPORT.</p> |
| <p>Information sought on this form is required to administer immigration, customs, quarantine, statistical, health, wildlife and currency laws of Australia and its collection is authorised by legislation. It will be disclosed only to agencies administering these areas and those entitled to receive it under Australian law. The leaflet <i>Safeguarding your personal information</i> is available at Australian ports and airports.</p> | <p style="font-size: large; font-weight: bold;">10081505</p> |
| <p>© Commonwealth of Australia 2008 15 (Design date 10/08)</p> | |

Incoming passenger card used from October 2008.

APPENDIX 1 PASSENGER CARDS *continued*

OUTGOING CARD - FRONT

| | | | | | | | | | | | | | | | | | | | | | | | | | | | | | | | | | | | | | |
|--|---|--|------------------------------|------------------------------|-----------------------------|-----------------------------|------------------------------|-----------------------------|------------------------------|--------------------------------|--|---|------------------------------|------------------------------|------------------------------|-----------------------------|-----------------------------|------------------------------|-----------------------------|------------------------------|--------------------------------|--|---|-------------------------------------|---|-----------------------------------|---|------------------------------------|---|--|---|-------------------------------------|---|----------------------------------|---|--------------------------------|---|
| <p>Outgoing passenger card • Australia</p> <p>PLEASE COMPLETE IN ENGLISH WITH A BLUE OR BLACK PEN</p> <p>▶ Family/surname <input type="text"/></p> <p>▶ Given names <input type="text"/></p> <p>▶ Passport number <input type="text"/></p> <p>▶ Flight number or name of ship <input type="text"/></p> <p>▶ Country where you will get off this flight <input type="text"/></p> <p>▶ What is your usual occupation? <input type="text"/></p> <p>▶ Nationality as shown on passport <input type="text"/></p> <p>▶ Date of birth Day <input type="text"/> <input type="text"/> Month <input type="text"/> <input type="text"/> Year <input type="text"/> <input type="text"/> <input type="text"/> <input type="text"/></p> | <p>▶ PLEASE <input checked="" type="checkbox"/> AND ANSWER D OR E OR F</p> <p>D Visitor or temporary entrant departing <input type="checkbox"/></p> <p>▶ State where you spent most time</p> <table style="width: 100%;"> <tr> <td>NSW <input type="checkbox"/></td> <td>Vic <input type="checkbox"/></td> </tr> <tr> <td>Qld <input type="checkbox"/></td> <td>SA <input type="checkbox"/></td> </tr> <tr> <td>WA <input type="checkbox"/></td> <td>Tas <input type="checkbox"/></td> </tr> <tr> <td>NT <input type="checkbox"/></td> <td>ACT <input type="checkbox"/></td> </tr> <tr> <td colspan="2" style="text-align: center;">Other <input type="checkbox"/></td> </tr> </table> <p>▶ Country of Residence <input type="text"/></p> | NSW <input type="checkbox"/> | Vic <input type="checkbox"/> | Qld <input type="checkbox"/> | SA <input type="checkbox"/> | WA <input type="checkbox"/> | Tas <input type="checkbox"/> | NT <input type="checkbox"/> | ACT <input type="checkbox"/> | Other <input type="checkbox"/> | | <p>E Australian resident departing temporarily <input type="checkbox"/></p> <p>▶ In which State do you live?</p> <table style="width: 100%;"> <tr> <td>NSW <input type="checkbox"/></td> <td>Vic <input type="checkbox"/></td> <td>Qld <input type="checkbox"/></td> </tr> <tr> <td>SA <input type="checkbox"/></td> <td>WA <input type="checkbox"/></td> <td>Tas <input type="checkbox"/></td> </tr> <tr> <td>NT <input type="checkbox"/></td> <td>ACT <input type="checkbox"/></td> <td>Other <input type="checkbox"/></td> </tr> </table> <p>▶ Intended length of stay overseas Years <input type="text"/> <input type="text"/> Months <input type="text"/> <input type="text"/> Days <input type="text"/> <input type="text"/> OR <input type="text"/> <input type="text"/></p> <p>▶ Country where you will spend most time abroad <input type="text"/></p> <p>▶ Main reason for overseas travel (<input checked="" type="checkbox"/> one only):</p> <table style="width: 100%;"> <tr> <td>Convention/conference <input type="checkbox"/></td> <td>1</td> <td>Employment <input type="checkbox"/></td> <td>5</td> </tr> <tr> <td>Business <input type="checkbox"/></td> <td>2</td> <td>Education <input type="checkbox"/></td> <td>6</td> </tr> <tr> <td>Visiting friends or relatives <input type="checkbox"/></td> <td>3</td> <td>Exhibition <input type="checkbox"/></td> <td>7</td> </tr> <tr> <td>Holiday <input type="checkbox"/></td> <td>4</td> <td>Other <input type="checkbox"/></td> <td>8</td> </tr> </table> | NSW <input type="checkbox"/> | Vic <input type="checkbox"/> | Qld <input type="checkbox"/> | SA <input type="checkbox"/> | WA <input type="checkbox"/> | Tas <input type="checkbox"/> | NT <input type="checkbox"/> | ACT <input type="checkbox"/> | Other <input type="checkbox"/> | Convention/conference <input type="checkbox"/> | 1 | Employment <input type="checkbox"/> | 5 | Business <input type="checkbox"/> | 2 | Education <input type="checkbox"/> | 6 | Visiting friends or relatives <input type="checkbox"/> | 3 | Exhibition <input type="checkbox"/> | 7 | Holiday <input type="checkbox"/> | 4 | Other <input type="checkbox"/> | 8 |
| NSW <input type="checkbox"/> | Vic <input type="checkbox"/> | | | | | | | | | | | | | | | | | | | | | | | | | | | | | | | | | | | | |
| Qld <input type="checkbox"/> | SA <input type="checkbox"/> | | | | | | | | | | | | | | | | | | | | | | | | | | | | | | | | | | | | |
| WA <input type="checkbox"/> | Tas <input type="checkbox"/> | | | | | | | | | | | | | | | | | | | | | | | | | | | | | | | | | | | | |
| NT <input type="checkbox"/> | ACT <input type="checkbox"/> | | | | | | | | | | | | | | | | | | | | | | | | | | | | | | | | | | | | |
| Other <input type="checkbox"/> | | | | | | | | | | | | | | | | | | | | | | | | | | | | | | | | | | | | | |
| NSW <input type="checkbox"/> | Vic <input type="checkbox"/> | Qld <input type="checkbox"/> | | | | | | | | | | | | | | | | | | | | | | | | | | | | | | | | | | | |
| SA <input type="checkbox"/> | WA <input type="checkbox"/> | Tas <input type="checkbox"/> | | | | | | | | | | | | | | | | | | | | | | | | | | | | | | | | | | | |
| NT <input type="checkbox"/> | ACT <input type="checkbox"/> | Other <input type="checkbox"/> | | | | | | | | | | | | | | | | | | | | | | | | | | | | | | | | | | | |
| Convention/conference <input type="checkbox"/> | 1 | Employment <input type="checkbox"/> | 5 | | | | | | | | | | | | | | | | | | | | | | | | | | | | | | | | | | |
| Business <input type="checkbox"/> | 2 | Education <input type="checkbox"/> | 6 | | | | | | | | | | | | | | | | | | | | | | | | | | | | | | | | | | |
| Visiting friends or relatives <input type="checkbox"/> | 3 | Exhibition <input type="checkbox"/> | 7 | | | | | | | | | | | | | | | | | | | | | | | | | | | | | | | | | | |
| Holiday <input type="checkbox"/> | 4 | Other <input type="checkbox"/> | 8 | | | | | | | | | | | | | | | | | | | | | | | | | | | | | | | | | | |
| <p>DECLARATION <i>The information I have given is true, correct and complete.</i></p> <p>YOUR SIGNATURE <input type="text"/> Day <input type="text"/> <input type="text"/> Month <input type="text"/> <input type="text"/> Year <input type="text"/> <input type="text"/> <input type="text"/> <input type="text"/></p> | | | | | | | | | | | | | | | | | | | | | | | | | | | | | | | | | | | | | |
| | | <p>TURN OVER THE CARD </p> <p>English</p> | | | | | | | | | | | | | | | | | | | | | | | | | | | | | | | | | | | |

OUTGOING CARD - BACK

| | |
|--|---|
| <p>▶ Are you taking out of Australia AUD10,000 or more in Australian or foreign currency equivalent? If answered 'Yes' you must complete an International Currency Transfer Report to present with this card. Yes <input type="checkbox"/> No <input type="checkbox"/></p> <p>▶ Did you know? You can find any lost superannuation accounts you may have by visiting www.ato.gov.au/superseeker. You will need to provide your Australian tax file number, address and date of birth to access the system. If you worked in Australia on a temporary resident visa you may be able to claim your superannuation money back. For more information on how to apply visit www.ato.gov.au/departaustralia</p> | <p>MAKE SURE YOU HAVE COMPLETED BOTH SIDES OF THIS CARD. PRESENT THIS CARD, ON DEPARTURE WITH YOUR BOARDING PASS AND PASSPORT.</p> |
| <p>Information sought on this form is required to administer immigration, customs, quarantine, statistical, health, wildlife and currency laws of Australia and its collection is authorised by legislation. It will be disclosed only to agencies administering these areas and those entitled to receive it under Australian law. The leaflet <i>Safeguarding your personal information</i> is available at Australian ports and airports.</p> | <p style="font-size: large; font-weight: bold;">01081607</p> |
| <p>© Commonwealth of Australia 2008 16 (Design date 01/08)</p> | |

Outgoing passenger card used from October 2008.

APPENDIX 2 DATA QUALITY ISSUES

SCANNING AND IMAGING

The introduction of a new passenger card processing system from July 2001 has meant that information is now available on the frequency and impact of data item imputation. Much of this information has not been available previously. Additionally, the move to a new processing system has also given rise to new data quality issues directly associated with scanning and imaging.

DEFECTIVE CARDS

There are a small number of unreadable or damaged passenger cards for each month. The Australian Bureau of Statistics (ABS) receives a count of these cards from the Department of Immigration and Citizenship (DIAC) by movement direction, box type (category of traveller) and port of clearance. The information on these cards is then physically processed by the ABS and included in the estimates presented here.

DURATION OF STAY

Over time there have been a number of changes to duration of stay. Initially duration of stay was collected from information provided by travellers on incoming and outgoing passenger cards in the intended length of stay fields: the visitor or temporary entrant section of the arrival card and the Australian resident departing temporarily section of the departure card. This remains the case for visitor arrivals and resident departures as the duration of stay is indicative only.

With the introduction by DIAC of the Travel and Immigration Processing System (TRIPS) in July 1990, DIAC has been able to determine the actual length of stay/absence for departing overseas visitors and returning Australian residents. Processing data based on TRIPS commenced in July 1998. This change resulted in an improvement in data quality with the distribution of the number of passengers staying for one year exactly declining significantly.

The introduction of the new passenger card processing system from July 2001 has shown further evidence of rounding to exactly one year for intended duration of stay in Australia or overseas, as reported by visitors arriving in Australia and Australian residents departing the country. To reflect the historical movement patterns, the records with a reported duration of exactly one year are allocated to short-term and long-term. For visitors, 75% of such records are allocated to short-term and 25% to long-term. The distribution is 67% short-term and 33% long-term for residents departing Australia.

Classification of duration of stay by category of traveller is as follows:

- *Permanent arrivals*: Duration of stay not applicable - set to zero.
- *Permanent departures*:
 - *Australia-born residents*: Duration of stay not applicable - set to zero.
 - *Overseas-born Australian residents*: Based on actual duration of stay as calculated by TRIPS using the initial permanent arrival date. However, there are some records that cannot be matched with the initial permanent arrival date. For these cases the migration arrival date is imputed to be 1 July 1990 which is the introduction date of TRIPS. Duration of stay for records that cannot be matched is calculated using 1 July 1990 as no earlier data is available for matching. An assumption is therefore being made that the migration of those overseas-born Australian residents was prior to this date.
- *Visitor departures and returning Australian residents*: Based on actual duration of stay/absence as calculated by TRIPS using the most recent arrival/departure date. However, when the previous movement cannot be found in TRIPS the duration of stay/absence is supplied by DIAC to ABS as not stated, with category of traveller set to short-term. After further imputation by ABS, the remaining not stated durations are then imputed to 10 days.
- *Visitor arrivals and Australian residents departing temporarily*: Based on the intended duration of stay/absence as stated by travellers on the incoming and outgoing passenger cards.

APPENDIX 2 DATA QUALITY ISSUES *continued*

NEW ZEALAND CITIZENS

Under the Trans-Tasman Agreement, New Zealand (NZ) citizens are not required to have a visa to travel to Australia. As a result, on arrival in Australia their visa documentation cannot be used to determine whether they are either a permanent migrant or a temporary visitor, or an Australian resident returning from NZ. DIAC believes that a substantial proportion of holders of NZ passports tick Box A (migrating to Australia) each time they arrive in the country, causing an overcount of NZ migrants entering Australia.

The following edits were applied to correct the overcounting of NZ migrants:

July 2001 to June 2002

With the introduction of the new processing system from July 2001, DIAC coded all NZ citizen arrivals who had ticked Box A and had been to Australia previously (based on immigration records) to resident returning (Box C). If these people were visitors previously, this recoding had the effect of incorrectly reducing the number of NZ migrants whilst at the same time incorrectly increasing the number of NZ citizen returning residents. This problem was overcome by moving the NZ citizens that have been changed by DIAC from Box A to Box C back to Box A.

July 2002 onwards

From July 2002, DIAC has introduced a new edit system to ensure accurate Permanent Arrivals of NZ citizens statistics. Where the person ticks Box A on his/her passenger card (first arrival as a migrant) the record is verified by checking previous entries and related passenger card records and if the person is previously recorded as a migrant or resident then they will be counted as returning residents. This will result in more accurate recording of NZ citizens who are migrating to Australia as against those who are residents returning.

NON-RESPONSE

A1 NON-RESPONSE RATES PRIOR TO IMPUTATION (a)—April 2009

| <i>OAD Variables</i> | <i>Incoming</i> | <i>Outgoing</i> |
|--|-----------------|-----------------|
| | % | % |
| Citizenship (nationality) | — | — |
| Country of birth | 4.5 | 3.4 |
| Age (date of birth) | — | — |
| Sex | — | — |
| Marital status(b) | 30.4 | 41.4 |
| Category of travel | 1.1 | 0.5 |
| Permanent migrant | | |
| Previous/future country of residence | (c) 61.7 | 10.9 |
| Overseas visitor | | |
| Intended/actual length of stay | 5.8 | 1.2 |
| Main reason for journey | 5.2 | . . |
| Australian residents | | |
| Actual/intended time away from Australia | 0.6 | 4.3 |
| Main reason for journey | . . | 2.8 |
| Occupation(d) | 7.5 | 5.3 |
| Country of embarkment/disembarkment | 4.1 | 2.8 |
| Whether intend to live in Australia for next 12 months | 27.1 | . . |

. . not applicable

— nil or rounded to zero (including null cells)

(a) Non-response rates are unweighted.

(b) Not available for Australian or New Zealand citizens.

(c) See DATA IMPUTATIONS, Country of previous residence, in this Appendix.

(d) Not available for short-term movements.

INTENDED LENGTH OF STAY/TIME AWAY FROM AUSTRALIA

Non-response rates are available for these data items from November 1998. For data prior to November 1998, imputation carried out as part of processing by DIAC has prevented reliable estimation of non-response rates for these two data items.

APPENDIX 2 DATA QUALITY ISSUES *continued*

MAIN REASON FOR JOURNEY

Before the introduction of the redesigned passenger card in July 1998, 5% of short-term visitor arrivals, on average, were recorded as having a reason for journey of 'Other' or 'Not Stated'. This percentage rose to 14% for July, 16% in August and 29% in September 1998 as a result of processing problems. These problems have now been addressed by DIAC, with the percentage of 'Other' and 'Not Stated' dropping in October 1998 to 8% and 7% in November 1998.

From the January 1999 issue of this publication, published figures (table 6 in this issue) referencing these three months were revised. The revised data were calculated by estimating the number of persons responding 'Other/Not Stated' using past trends for each country of citizenship and proportionally allocating any persons in excess of the estimated 'Other/Not Stated' total amongst the remaining categories. 'Not Stated' rates are now separately available from February 1999 onwards.

STATE WHERE SPENT MOST TIME

For the months of August 1998, September 1998 and October 1998, data entry problems experienced by DIAC caused an overstatement of the Northern Territory as the main state of stay with a corresponding understatement for the remaining states and territories. In November 1998 these numbers returned to levels more comparable with previous years, with DIAC indicating that they had instigated data quality procedures to address this issue.

From the January 1999 issue of this publication, published figures (table 11 in this issue) referencing these months were revised. The revised data were calculated by estimating the number of persons indicating the Northern Territory as their main state of stay using past trends and proportionally allocating any persons in excess of these estimates amongst the remaining states and territories.

With the introduction of the new processing system from July 2001, DIAC has provided the ABS with data on all missing values of state of stay and state of usual residence. These missing values are now imputed.

DATA IMPUTATIONS

Data was imputed for non-response for state of stay/residence. For state of stay, non-responses were imputed at the category of traveller and state of clearance level. Non-response rates for state of stay are presented in the table below:

A2 NON-RESPONSE RATES FOR STATE OF STAY BY CATEGORY OF TRAVELLER (a)

| <i>Category of traveller</i> | <i>April 2009</i> |
|---------------------------------|-----------------------|
| | % |
| Permanent arrivals – settlers | 5.8 |
| Long-term residents returning | 1.3 |
| Long-term visitors arriving | 4.5 |
| Short-term residents returning | 0.5 |
| Short-term visitors arriving | 5.9 |
| Residents departing permanently | 3.0 |
| Long-term residents departing | 3.0 |
| Long-term visitors departing | 3.4 |
| Short-term residents departing | 1.8 |
| Short-term visitors departing | 6.0 |

(a) Non-response rates are weighted.

Non-responses for country of stay and country of usual residence were imputed in two stages. In the first stage, records with country of stay/residence missing were set to country of disembarkation/embarkation if a response was available. In the second stage, for remaining records where country of stay/residence was missing, values were imputed at the category of traveller, reason for journey and country of citizenship level based on

APPENDIX 2 DATA QUALITY ISSUES *continued*

DATA IMPUTATIONS *continued*

Change in approach to non-response state of stay for long-term visitor departures

responses to other cards within each subgroup. Accordingly, the level of records with data for country of stay/residence not stated has been minimised.

A procedure has been applied before prorating of a non-response to state of stay for long-term visitor departures. If a correction to the box marked by a passenger is made (e.g. a visitor marks a resident box), the state of stay recorded in the incorrect box is applied.

Country of stay

Table A3 below presents the percentage of records with country of stay/residence missing as supplied by DIAC and prior to imputation.

A3 COUNTRY OF STAY/RESIDENCE NON-RESPONSE RATES BY PASSENGER CARD BOX TYPE (a)

| | <i>April</i> 2009 |
|--|----------------------|
| <i>Box type</i> | % |
| A: Migrating permanently to Australia(b) | 61.7 |
| B: Visitor or temporary entrant | 7.2 |
| C: Resident returning to Australia | 7.4 |
| D: Visitor of temporary entrant departing | 5.6 |
| E: Australian resident departing temporarily | 1.7 |
| F: Australian resident departing permanently | 10.9 |

(a) As on initial data supplied by DIAC.

(b) See DATA IMPUTATIONS, Country of previous residence, in this Appendix.

Table A4 below shows the non-response rates for country of stay/residence following the application of the first stage of imputation.

A4 COUNTRY OF STAY/RESIDENCE NON-RESPONSE RATES BY CATEGORY OF TRAVELLER (a) (b)

| | <i>April</i> 2009 |
|----------------------------------|----------------------|
| <i>Category of traveller</i> | % |
| Permanent arrivals – settlers(c) | 61.7 |
| Long-term residents returning | 0.8 |
| Long-term visitors arriving | 0.7 |
| Short-term residents returning | 0.6 |
| Short-term visitors arriving | 0.4 |
| Residents departing permanently | 0.8 |
| Long-term residents departing | 0.1 |
| Long-term visitors departing | 0.5 |
| Short-term residents departing | 0.3 |
| Short-term visitors departing | 0.2 |

(a) Following imputation based on country of disembarkation/embarkation.

(b) Non-response rates are weighted.

(c) See DATA IMPUTATIONS, Country of previous residence, in this Appendix.

Country of previous residence

The proportion of permanent arrivals where country of previous residence was not stated increased markedly over the two years to August 2006. Prior to August 2006 ABS imputed this data item for these movements using country of embarkation information as well as stated responses of other permanent arrivals. As a result of this increase and the continuing high level of not stated responses (see table A4), records of permanent arrivals whose country of previous residence is not stated have not been imputed for

APPENDIX 2 DATA QUALITY ISSUES *continued*

Country of previous residence
continued

August 2006 data onwards. For all other arrivals, imputation based on country of embarkation has continued.

Country of birth for New
Zealand passport holders

With the introduction of biometric passports for NZ passports, from 21 April 2005, the country of birth of the holder no longer appears on the passport. This was the only source of information on the country of birth of NZ citizens travelling to or from Australia. Therefore, with the increased numbers of travellers holding NZ biometric passports the proportion of movement records with not stated country of birth increased substantially. For other travellers who are not NZ citizens, country of birth information can be obtained from their visa information. Visa information for most NZ citizens is not available as, under the trans-Tasman agreement, they do not need to hold a visa to travel to Australia. For August 2007 data, the total number of not stated responses for country of birth as supplied by DIAC was 76,763. NZ passport holders represented approximately 88% of these non-responses. By August 2008 the total number of not stated responses had increased to 101,684 for the month with NZ passport holders representing 92%.

In order to alleviate this issue the records with not stated responses for country of birth have been imputed at the category of traveller and country of citizenship level from August 2007. As a result, the total number of not stated responses for country of birth has been reduced to 800 (August 2007) and 745 (August 2008) and the number of non-responses for NZ citizens to zero for both periods. This method of imputation will be in place until a more suitable means of obtaining or imputing country of birth data for NZ citizens can be implemented.

JULY 1998 PROCESSING

Prior to July 1998 the number of overseas-born (excluding NZ) permanent departures of Australian residents was overstated.

In July 1998, DIAC introduced a Box type validation edit to the processing system. This edit checks and corrects the Box type according to the Visa Class/subclass. With the exception of Australian and NZ citizens, only Australian residents departing permanently (Box F) who hold permanent visas are retained in this Box type. For temporary visa holders who incorrectly ticked Box F, their Box type was changed to visitor or temporary entrant departing (Box D). This edit has been ongoing, with over 5,000 records being moved from Box F to Box D in the year 2005–06.

SEPTEMBER 1998
PROCESSING

A problem was experienced in the processing of OAD data for movement dates between 6 September 1998 and 16 September 1998, following the introduction of changes to DIAC's input processing system. This problem may affect in the order of 10% of all September 1998 records used in estimation and result in incorrect details for citizenship, date of birth, sex and country of birth.

PERMANENT ARRIVALS
DURING 1999

The number of permanent arrivals during July to December 1999 was revised in October 2000, as advised by DIAC.

SEPTEMBER 1999
PROCESSING

September 1999 overseas arrivals and departures data are revised for movements from, and to, China (excl. SARs and Taiwan) and Hong Kong (SAR of China) in respect of three variables: country of birth, country of citizenship and country of residence/stay. Changes to 'country of birth' and 'country of citizenship' have been made from data supplied by DIAC. Changes to 'country of residence/stay' have been made by assuming the average proportion of country of birth to country of residence/stay for migrants from China (excl. SARs and Taiwan) and Hong Kong (SAR of China) in September 1995 to September 1998.

SEPTEMBER QUARTER 2000
PROCESSING

A processing error was identified which affected the distribution of short-term resident departures by reason for journey for the months of August and September 2000. Affected data was re-processed, and a revised copy of table 3 for the September quarter 2000 was reissued in the supplement October to December 2000 issue of this publication.

APPENDIX 2 DATA QUALITY ISSUES *continued*

OCTOBER 2005 PROCESSING

In June 2006 DIAC advised that some passenger cards predominantly from Adelaide airport were not processed in time for the October 2005 Overseas Arrivals and Departures data cut off date. The October 2005 data was reprocessed to include the missing records (approximately 7,800) and the revised data was published in the June 2006 issue of this publication. All associated time series spreadsheets and data files were revised.

Differences between the revised October 2005 data and the figures published in the October 2005 issue of this publication were spread across all categories of movement and all variables. A breakdown of the numeric differences by category of movement is provided in the June 2006 issue of this publication.

NOVEMBER 2008 PROCESSING

DIAC advised that the previous supply of November 2008 data excluded 3,580 arrivals due to passenger cards being mislaid. This represented 0.4% of all arrivals in November 2008. For further details see the November 2008 issue of this publication.

The ABS and DIAC reprocessed November 2008 data and the revised data are released in this issue (December 2008). As well as the missing arrival passenger cards identified above, processing was completed on additional cards and these records were included in the November 2008 revision. The additional identification of records was mainly due to the movement of the monthly processing cut-off date and reprocessing November 2008 data. The total additional movements affect both arrivals (6,144 movements) and departures (4,078 movements).

CHANGE TO PROCESSING OF INTENDED LENGTH OF STAY

There is evidence to suggest that when completing the intended length of stay question on the incoming passenger card (Box B), some passengers are entering their arrival/departure date or their birth date rather than their intended length of stay.

From September 2003 a rule has been implemented to the data processing system stating that if all three elements are complete (years, months and days), then the intended length of stay is to be coded to a non-response. The ABS currently assigns 'not stated' duration as a short-term movement, however a review of this procedure will be undertaken in the future.

This procedure changes the prior data processing system which read only the years from the field on the passenger cards. The previous data processing system could have added to overestimation of the number of long-term visitor arrivals.

APPENDIX 3 SEASONALLY ADJUSTED AND TREND ESTIMATES

INTRODUCTION

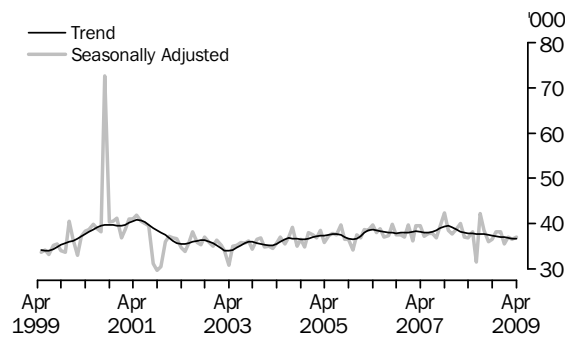
Seasonally adjusted and trend estimates add to the understanding of overseas arrivals and departures (OAD) statistics. Seasonally adjusted estimates allow users to analyse short-term movements including irregular impacts on the series, while trend estimates provide a better method to analyse and monitor the underlying direction of the short-term movement series. In most cases the trend series is the best source of information on the long-term direction of these statistics.

SHORT-TERM VISITOR ARRIVALS

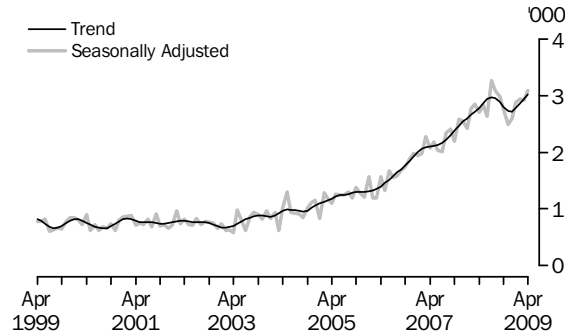
Selected source countries

The graph for the United States of America shows the large increase in the seasonally adjusted series for short-term visitor arrivals in September 2000, during the Olympic Games in Sydney. For Viet Nam the graph shows, for the trend series, strong growth from early 2003 to mid 2008, followed by a short decline which has subsequently reversed. The graph for Japan shows the significant impact of Severe Acute Respiratory Syndrome (SARS) on the seasonally adjusted arrivals series in mid-2003.

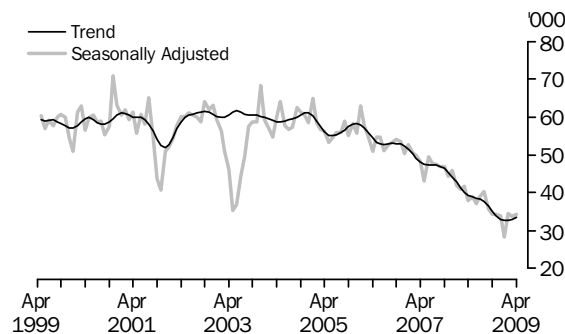
USA, Short-term Visitor Arrivals



VIET NAM, Short-term Visitor Arrivals



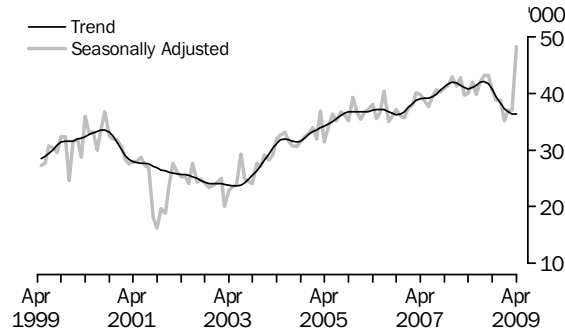
JAPAN, Short-term Visitor Arrivals



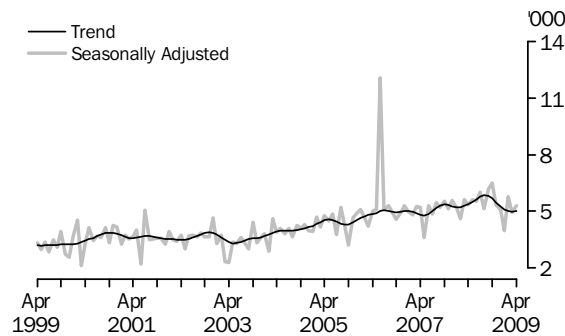
SHORT-TERM RESIDENT
DEPARTURES
Selected destinations

For residents departing to the United States of America the graph illustrates the effect of the 11 September 2001 terrorist attacks in that country on short-term departures of Australian residents to the United States of America. The graph for Germany shows, in the seasonally adjusted series, the effect of Germany hosting the 2006 FIFA World Cup (9 June to 9 July). For Indonesia the graph shows the impact of the 12 October 2002 Bali bombing and the reduced level of travel experienced in the next twelve months. The effect of the 1 October 2005 Bali bombing is also evident and another break in the trend series was introduced. Strong growth resulted in the insertion of a further break in the trend series from December 2006.

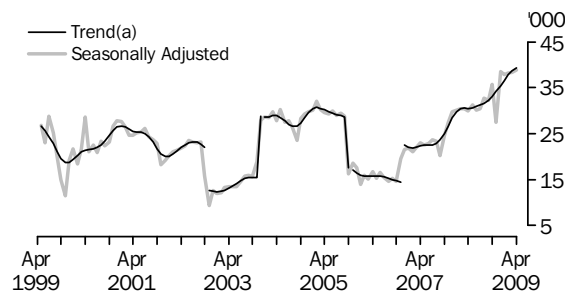
USA, Short-term Resident Departures



GERMANY, Short-term Resident Departures



INDONESIA, Short-term Resident Departures



(a) Breaks in trend series – see Explanatory Notes, paragraph 25.

STANDARD ERRORS

RELIABILITY OF ESTIMATES

Estimates based on a sample are subject to sampling variability, that is, they may differ from those that would be obtained from full enumeration.

The sampling error associated with any estimate can be estimated from the sample results and one measure so derived is the standard error. Given an estimate and the standard error on that estimate, there are about two chances in three that the sample estimate will differ by less than one standard error from the figure that would have been obtained from full enumeration, and about nineteen chances in twenty that the difference will be less than two standard errors. The relative standard error is the standard error on the estimate expressed as a percentage of the estimate.

It would be impractical to publish estimates of standard errors for all figures in individual tables. However, the following table of standard errors and relative standard errors gives an indication of the magnitude of the sampling error associated with any estimate of a particular size for short-term and total movement.

APPROXIMATE STANDARD ERROR ON ESTIMATES FOR STRATIFIED SAMPLE

| <i>Estimated number of movements</i> | SHORT-TERM ARRIVAL OR DEPARTURE OF AUSTRALIAN RESIDENT | | SHORT-TERM ARRIVAL OR DEPARTURE OF OVERSEAS VISITOR | | TOTAL ARRIVAL OR DEPARTURE | |
|--------------------------------------|--|--------------------------------|---|--------------------------------|----------------------------|--------------------------------|
| | <i>Standard error</i> | <i>Relative standard error</i> | <i>Standard error</i> | <i>Relative standard error</i> | <i>Standard error</i> | <i>Relative standard error</i> |
| | no. | % | no. | % | no. | % |
| 5000000 | 11 302 | 0.2 | 7 934 | 0.2 | 9 705 | 0.2 |
| 4000000 | 10 244 | 0.3 | 7 170 | 0.2 | 8 796 | 0.2 |
| 3000000 | 9 021 | 0.3 | 6 292 | 0.2 | 7 746 | 0.3 |
| 2000000 | 7 536 | 0.4 | 5 233 | 0.3 | 6 470 | 0.3 |
| 1000000 | 5 530 | 0.6 | 3 815 | 0.4 | 4 745 | 0.5 |
| 500000 | 4 047 | 0.8 | 2 778 | 0.6 | 3 469 | 0.7 |
| 100000 | 1 941 | 1.9 | 1 325 | 1.3 | 1 658 | 1.7 |
| 50000 | 1 408 | 2.8 | 962 | 1.9 | 1 201 | 2.4 |
| 10000 | 662 | 6.6 | 455 | 4.6 | 561 | 5.6 |
| 5000 | 476 | 9.5 | 329 | 6.6 | 402 | 8.0 |
| 2000 | 307 | 15.3 | 214 | 10.7 | 258 | 12.9 |
| 1000 | 219 | 21.9 | 154 | 15.4 | 184 | 18.4 |
| 750 | 191 | 25.4 | 135 | 18.0 | 159 | 21.3 |
| 500 | 156 | 31.3 | 111 | 22.3 | 130 | 26.1 |
| 400 | 140 | 35.0 | 100 | 25.0 | 117 | 29.2 |
| 300 | 122 | 40.5 | 87 | 29.1 | 101 | 33.7 |
| 200 | 100 | 49.8 | 72 | 36.0 | 83 | 41.3 |
| 100 | 71 | 70.6 | 52 | 51.8 | 58 | 58.3 |

An example of the use of this table is as follows. If the estimate of the number of Australian resident departures for short-term visits abroad is 1,000, then the standard error on this estimate is 219; i.e. there are two chances in three that the actual number of Australian resident departures for short-term visits abroad will lie between 781 and 1,219 and nineteen chances in twenty that it will lie between 562 and 1,438.

The larger the size of an estimate the smaller the relative standard error. For any estimate of greater than 5,000,000 the relative standard error will be less than 0.2%.

The estimate of the difference between an estimate in two different periods, or between different estimates from the same period, is also subject to sampling error. The standard error on the difference between any two estimates which are subject to sampling error can be approximated by using the larger standard error of the estimates inflated by a factor of 1.4.

STANDARD ERRORS *continued*

RELIABILITY OF ESTIMATES *continued*

An example of the use of this procedure is as follows. Assume the estimates of the number of arrivals to Australia from Germany during January 2004 and January 2005 are 7,500 and 10,000 respectively. The difference between the 2004 and 2005 figure is 2,500 and the standard errors on these estimates are approximately 392 and 455. The standard error on the difference is approximately 637 (1.4×455), and there are nineteen chances in twenty that the estimate of the difference between the two years will lie between 1,226 and 3,774.

GLOSSARY

| | |
|---|--|
| Australian resident | An Australian resident is self-defined as reported by travellers when completing an incoming or outgoing passenger card. |
| Category of movement | <p>Overseas arrivals and departures are classified according to length of stay (in Australia or overseas), as recorded by travellers on passenger cards or derived with reference to previous border crossings. There are three main categories of movement:</p> <ul style="list-style-type: none">■ permanent movements;■ long-term movements (one year or more); and■ short-term movements (less than one year). <p>A significant number of travellers (i.e. overseas visitors to Australia on arrival and Australian residents going abroad) state exactly 12 months or one year as their intended period of stay. Many of them stay for less than that period and on their departure from, or return to, Australia are therefore classified as short-term. Accordingly, in an attempt to maintain consistency between arrivals and departures, movements of travellers who report their actual or intended period of stay as being one year exactly are randomly allocated to long-term or short-term in proportion to the number of movements of travellers who report their actual length of stay as up to one month more, or one month less, than one year.</p> |
| Country of residence | Country of residence refers to the country in which travellers regard themselves as living or as last having lived. |
| Intended length of stay | On arrival in Australia, all overseas visitors are asked to state their 'intended length of stay in Australia'. On departure from Australia, all Australian residents are asked to state their 'intended length of stay abroad'. |
| Long-term arrivals | <p>Long-term arrivals comprise:</p> <ul style="list-style-type: none">■ overseas migrants (comprising visitors and temporary entrants) who intend to stay in Australia for 12 months or more (but not permanently); and■ Australian residents returning from overseas after an absence of 12 months or more. |
| Long-term departures | <p>Long-term departures comprise:</p> <ul style="list-style-type: none">■ Australian residents who intend to stay abroad for 12 months or more (but not permanently); and■ overseas migrants departing who stayed 12 months or more in Australia. |
| Main destination | Australian residents travelling overseas are asked on departure for the name of the country in which they intend to spend most time. |
| Main reason for journey | <p>Overseas visitors/temporary entrants arriving in Australia and Australian residents departing temporarily from Australia are asked to state their main reason for journey. From September 1994, all statistics relating to main reason for journey have been published using the following categories:</p> <ul style="list-style-type: none">■ convention/conference■ business■ visiting friends/relatives■ holiday■ employment■ education■ other. <p>In tabulations of data collected before September 1994, the 'other' category included 'in transit' and the 'holiday' category included both 'student vacation' and 'accompanying business visitor'.</p> |
| Overseas arrivals and departures | Overseas arrivals and departures (OAD) refer to the recorded arrival or departure of persons through Australian airports (or sea ports). Statistics on OAD relate to the number of movements of travellers rather than the number of travellers (i.e. the multiple movements of individual persons during a given reference period are all counted). |

GLOSSARY *continued*

| | |
|------------------------------------|---|
| Permanent arrivals | Permanent arrivals (settlers) comprise: <ul style="list-style-type: none">■ travellers who hold migrant visas (regardless of stated intended period of stay);■ New Zealand citizens who indicate an intention to migrate permanently; and■ those who are otherwise eligible to settle (e.g. overseas born children of Australian citizens). |
| Permanent departures | Permanent departures are: <ul style="list-style-type: none">■ Australian residents (including former settlers) who on departure state that they are departing permanently. |
| Short-term arrivals | Short-term arrivals comprise: <ul style="list-style-type: none">■ overseas visitors/migrants who intend to stay in Australia for less than 12 months; and■ Australian residents returning from overseas after an absence of less than 12 months. |
| Short-term departures | Short-term departures comprise: <ul style="list-style-type: none">■ Australian residents who intend to stay abroad for less than 12 months; and■ overseas visitors/migrants departing after a stay of less than 12 months in Australia. |
| State where spent most time | Overseas visitors are asked on departure for the name of the state or territory in which they spent the most time. This differs from 'state or territory of clearance' which is available on request. |

FOR MORE INFORMATION . . .

INTERNET **www.abs.gov.au** the ABS website is the best place for data from our publications and information about the ABS.

INFORMATION AND REFERRAL SERVICE

Our consultants can help you access the full range of information published by the ABS that is available free of charge from our website. Information tailored to your needs can also be requested as a 'user pays' service. Specialists are on hand to help you with analytical or methodological advice.

PHONE 1300 135 070

EMAIL client.services@abs.gov.au

FAX 1300 135 211

POST Client Services, ABS, GPO Box 796, Sydney NSW 2001

FREE ACCESS TO STATISTICS

All statistics on the ABS website can be downloaded free of charge.

WEB ADDRESS www.abs.gov.au